

MARINE PRODUCTS CATALOGUE

NIKURA KOGYO CO.,LTD.



新倉工業株式會社

70 years of tradition,
we have top class achievements in marine industry.
"NIIKURA KOGYO", which has strengths in technology,
creates excellent personnel and creates reliable products,
and we will make a rapid progress of
"Manufacturing & Service Business".

Corporate Philosophy / Management Policy

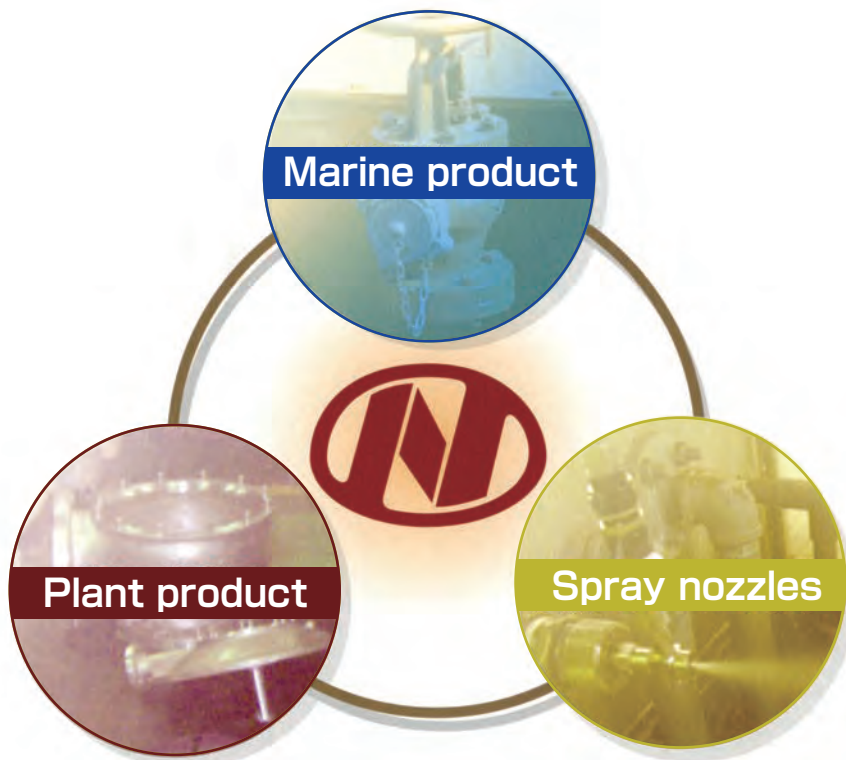
- Our company contributes to society as a "Manufacturing & Service Business" that always provides the best products and services to our customers.
- We will contribute to the development of society through our corporate business and aim to be a company desired by society.

main industry

NIIKURA KOGYO focuses on the "Vessel Fittings" and widely utilizes the technology and know-how it has been cultivated as a manufacture of various plant products and spray nozzles.

NIIKURA KOGYO focuses on the "Fluid Control".

We have utilised the technology and expertise widely in our business and provide various products. As our main product, we have "Marine product", "Plant product", "Spray nozzles" in our lineup.



About TOP COAT CO.,LTD

TOP COAT CO., LTD is a painting company of NIIKURA KOGYO GROUP. They are located in the same industrial zone as NIIKURA KOGYO. They can be painted according to specifications, from the base of painting to the finishing process.



About SAGA IMONO CO.,LTD.

SAGA IMONO CO., LTD. Is a casting manufacturing company of NIIKURA KOGYO GROUP.

Recently, the number of casting companies is decreasing in Japan. NIIKURA KOGYO GROUP has a casting manufacturing company. If you are having trouble making a casting, please contact us regardless of the material and size.



新倉工業株式會社

NC No. Type & Usage	Page
General use Butterfly valve	
<i>General use Butterfly valve</i>	P.1
Dynamic Flame Arrester	
<i>Dynamic Flame Arrester</i>	P.2
JIS Marine Valve	
<i>JIS Marine Valve</i>	P.3
LUB. OIL SYSTEM FITTINGS	
NC No.75 <i>LO-Maxfilter LG040</i>	P.4
NC No.75 <i>LO-Maxfilter LA3-1010 to 4040</i>	P.5
NC No.75SC <i>SLUDGE COLLECTOR for LO-Maxfilter</i>	P.6
FUEL OIL SYSTEM FITTINGS	
NC No.75FO <i>FO-Maxfilter</i>	P.7
NC No.78 <i>FLOW TURN STRAINER</i>	P.8
NC No.92 <i>EMERGENCY SHUT-OFF VALVES & AIR RESERVOIR</i>	P.9
	<i>Emergency Shut-off Valve (Stainless Steel)</i> P.10
	<i>AIR RESERVOIR, CONTROL DEVICE</i> P.11
NC No.84 <i>AUTO DEGAS FLOAT VALVE</i>	P.12
FLOAT CHECK VALVE	
NC No.38B <i>FLOAT CHECK VALVE for VACUUM BREAKER</i>	P.13
NC No.38B <i>FLOAT CHECK VALVE for F.O. OVER FLOW PIPE</i>	P.13
SCUPPER & SANITARY PIPE FITTINGS	
NC No.17 <i>STORM VALVE (Vertical & Horizontal Type)</i>	P.15
NC No.17 <i>STORM VALVE (Angle Type)</i>	P.16
NC No.82 <i>SOIL LINE BRANCH</i>	P.17
NC No.FCV-N-T <i>FLOAT CHECK VALVE for REEFER CARRIER</i>	P.17
NC No.40 <i>SCUPPER TRAP</i>	P.18
NC No.50 <i>DECK SCUPPER PLUG</i>	P.19
NC No.50 <i>GUTTER PLUG, MINI DRAIN PLUG</i>	P.20
AIR PIPE & SOUNDING PIPE FITTINGS	
NC No.53 <i>AIR VENT HEAD</i>	P.21
NC No.53 <i>53P(W) MODEL, AIR VENT HEAD GOOSENECK MODEL</i>	P.22
NC No.38D <i>DEBALLAST COVER</i>	P.22
NC No.37AS <i>SOUNDING PIPE HEAD</i>	P.23
NC No.37AF <i>FILLING CAP</i>	P.23
NC No.37N <i>SELF-CLOSING GATE VALVE HEAD</i>	P.23
NC No.37NF <i>SELF-CLOSING VALVE HEADS with SAFETY CHECK SIGNAL</i>	P.23
NC No.36A-40 <i>SELF-CLOSING COCK HEAD</i>	P.24
NC No.36F-40 <i>SELF-CLOSING COCK HEAD UNIT TYPE DNV approved.</i>	P.24
NC No.36P-40 <i>SELF-CLOSING COCK HEAD with PEDAL TYPE DNV approved.</i>	P.24
NC No.37C-65 <i>Short sounding pipes containing cargo oil and chemicals.</i>	P.24
	<i>Easy operation.</i> P.24
NC No.37BN <i>DECK PIECE</i>	P.24

BILGE & BALLAST PIPE FITTINGS

NC No.1	HAND PISTON PUMP	P.25
NC No.3	HAND PUMP	P.25
NC No.4	WATER JET EDUCTOR	P.26
NC No.39	SELF-CLOSING VALVE	P.27
NC No.62	SMOOTH CHECK VALVE	P.28
NC No.62	SMOOTH CHECK VALVE with ROSE BOX	P.28
NC No.62RB	RB ROSE BOX	P.28
NC No.51	DECK STAND	P.29
NC No.57	DECK STAND FLUSH TYPE	P.29
NC No.44	SURFACE VALVE	P.30
NC No.44R-H	SPILL OIL VALVE	P.30
NC No.111	PV01-150, 200	P.31

SPRAY NOZZLE AND STEAM SILENCER

NC No.107	SPRAY NOZZLE	P.32
NC No.65	WINDOW WASHER for WHEEL HOUSE	P.32
NC No.29	STEAM SILENCER	P.32

STEAM HEATING PIPE FITTINGS

NC No.30Z	MIXING NOZZLE	P.28
-----------	----------------------------	------

NEW VENTING & PIPE FITTINGS

NC No.0010-090	Dual Sealing High Velocity Vent Valve	P.35,36
----------------	--	---------

VENTING & INERTING PIPE FITTINGS

NC No.10	HIGH VELOCITY VENTING VALVE	P.37
NC No.10	VACUUM RELIEF VALVE	P.38
NC No.12	BUFFER CHAMBER	P.39
NC No.11	GAS FREE VENT COVER	P.39
NC No.15	FLAME SCREEN	P.40
NC No.9	PISTON TYPE BREATHER VALVE	P.41
NC No.13	WEIGHT TYPE BREATHER VALVE with FLAME SCREEN	P.42
NC No.63I	GAS LINE NON-RETURN VALVE	P.43
NC No.63	NON-RETURN VALVE	P.43

CARGO OIL PIPE FITTINGS

NC No.62	SWING CHECK VALVE	P.44
NC No.71	GAS LINE BUTTERFLY VALVE	P.44
NC No.77	LINE BLINDER	P.45

CLEANING MACHINES

NC No.67	JWP-40 CHEMICAL TANK CLEANING GEAR	P.46
	MIST DIY	P.46

GAS CARRIER FITTINGS

	GAS RELIEF VALVE	P.47
	EDUCTOR FOR INTER BARRIER SPACE	P.48
NC No.106	EMERGENCY OPEN COVER	P.48
NC No.104	LPG JET EDUCTOR	P.48

OTHER FITTINGS

NC No.11	MS COVER	P.49
NC No.13	BREATHER VALVE for Life Boat	P.49

NEW PRODUCT

GBFX

General use Butterfly valve

GBFX series released!



Complied with the JIS 5K flange standard

Characteristic

- Smooth opening and closing operation
- Reliable durability
- Reduction of opening/closing torque
- Both sealing properties
- No gasket required on the flange surface
- Easy maintenance

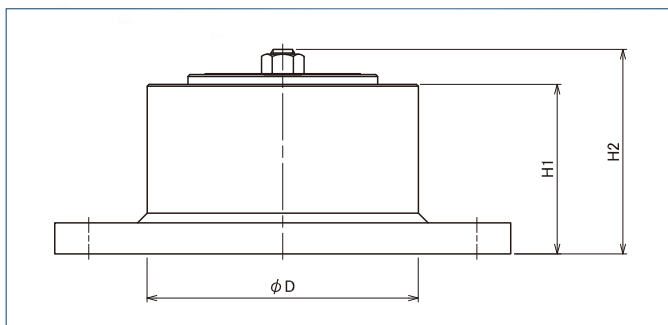
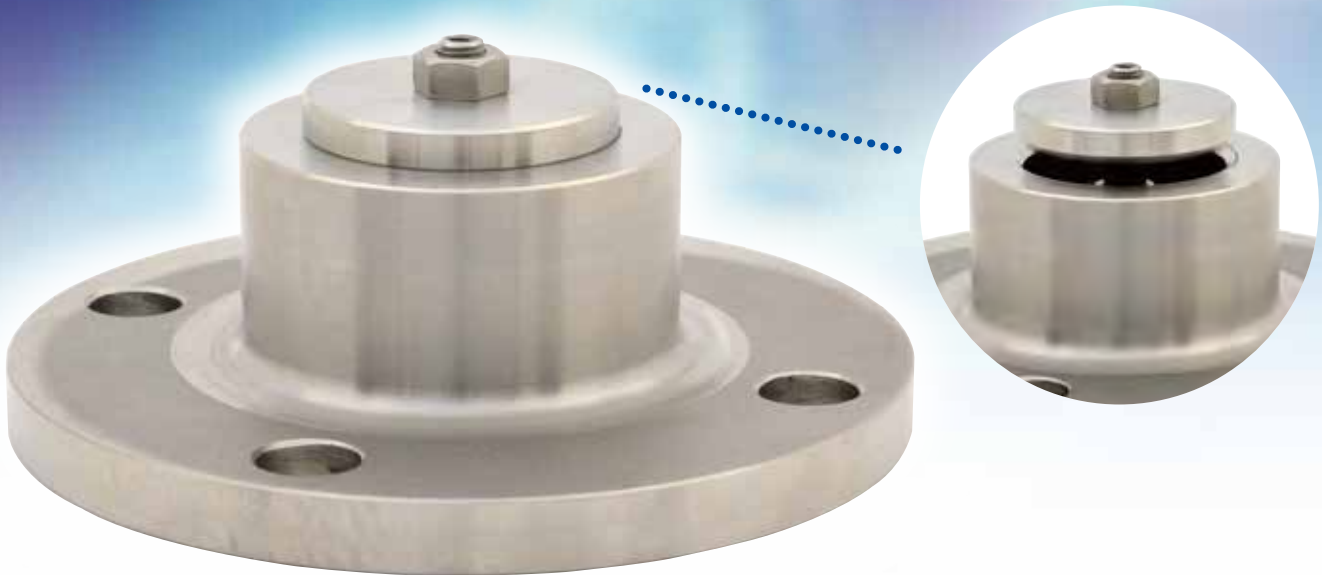
NEW PRODUCT

DFA

DYNAMIC FLAME ARRESTER

DFA is a device installed on the head of Vent riser of Tanker so that prevented the intrusion flame from the ignition source over pressur in the tank that occurs at voyage during and cargo.

APPRICATION FOR APPROVAL for IMO MSC/Circ.677, Circ.1009, Cric.1324II C
ISO 15364 : 2007, ISO 16852 : 2008



Model	H2	H2	D	WEIGHT(kg)
DFA-80	58.7	76	80	3
DFA-100	69	84.5	100	4.5
DFA-125	87.4	105.4	125	7.5
DFA-150	104	122	150	10
DFA-200	123.5	145.5	200	15.5

NEW PRODUCT

JIS Marine Valve



JIS F 7305/7307/7310
CAST IRON GLOBE VALVE
(5K/10K/16K)



JIS F 7306/7308/7310
CAST IRON ANGLE VALVE
(5K/10K/16K)



JIS F 7363/7364/7369
CAST IRON GATE VALVE
(5K/10K/16K)

OTHER LINEUP

JIS F 7353/7375
CAST IRON
SCREW-DOWN CHECK GLOBE VALVE
(5K/10K)

JIS F 7354/7376
CAST IRON
SCREW-DOWN CHECK ANGLE VALVE
(5K/10K)

JIS F 7372/7373
CAST IRON SWING CHECK VALVE
(5K/10K)

*More upcoming variations
to be released!*

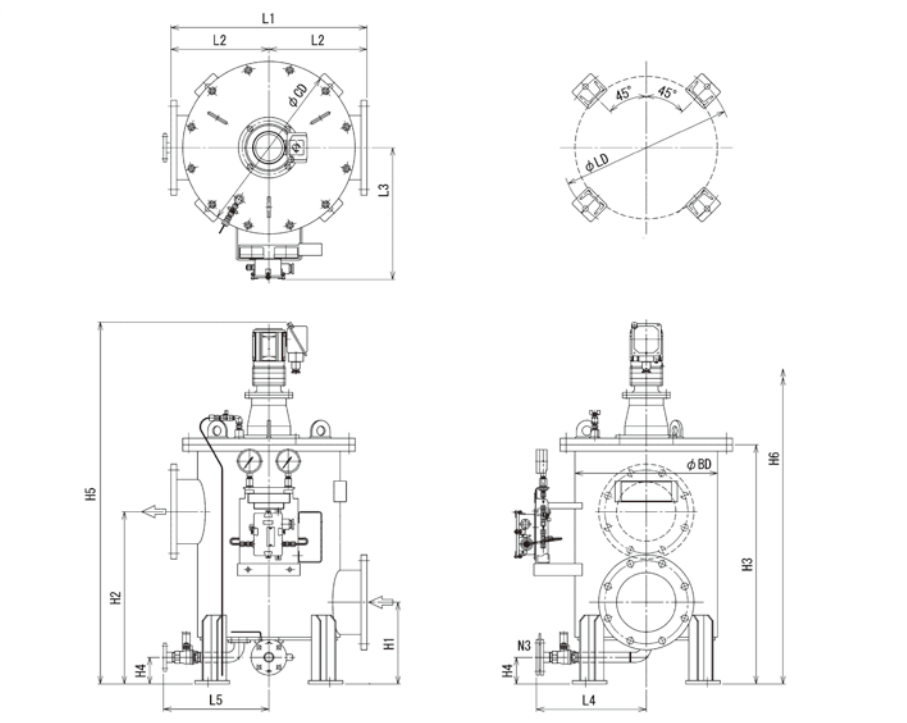
NC No.75 LO-Maxfilter LG040

Purpose L.O. 2ND BACK-WASHING FILTER for M/E & CAM SHAFT



CONNECTING FLANGE : JIS5K

MODEL	L1	L2	L3	L4	L5	H1	H2	H3	H4	H5	H6	CD	BD	LD	HOLD CAPA.	DRY WEIGHT
LG040-ALL-1313	610	305	420	345	330	250	480	655	90	1070	1200	530	430	530	64L	230kg
LG040-ALL-1515	610	305	420	345	330	250	530	755	90	1170	1400	530	430	530	77L	245kg
LG040-ALL-1820	660	330	445	370	355	275	580	805	90	1220	1500	580	480	580	102L	300kg
LG040-ALL-2020	690	345	455	385	370	275	580	805	90	1220	1500	610	508	600	113L	340kg
LG040-ALL-2220	750	375	480	410	395	280	600	825	90	1245	1600	665	558.8	650	155L	385kg
LG040-ALL-2525	800	400	510	435	420	310	640	900	90	1370	1700	725	609.6	700	205L	460kg
LG040-ALL-3030	940	470	560	485	470	340	660	960	90	1440	1800	840	712	800	300L	620kg
LG040-ALL-3535	1050	525	600	550	500	370	700	990	85	1470	1800	910	780	880	380L	770kg
LG040-ALL-4035	1130	565	640	590	540	395	730	1050	85	1530	2000	1000	863.6	965	520L	910kg
LG040-ALL-4040	1130	565	640	590	540	395	730	1050	85	1530	2000	1000	863.6	965	520L	910kg



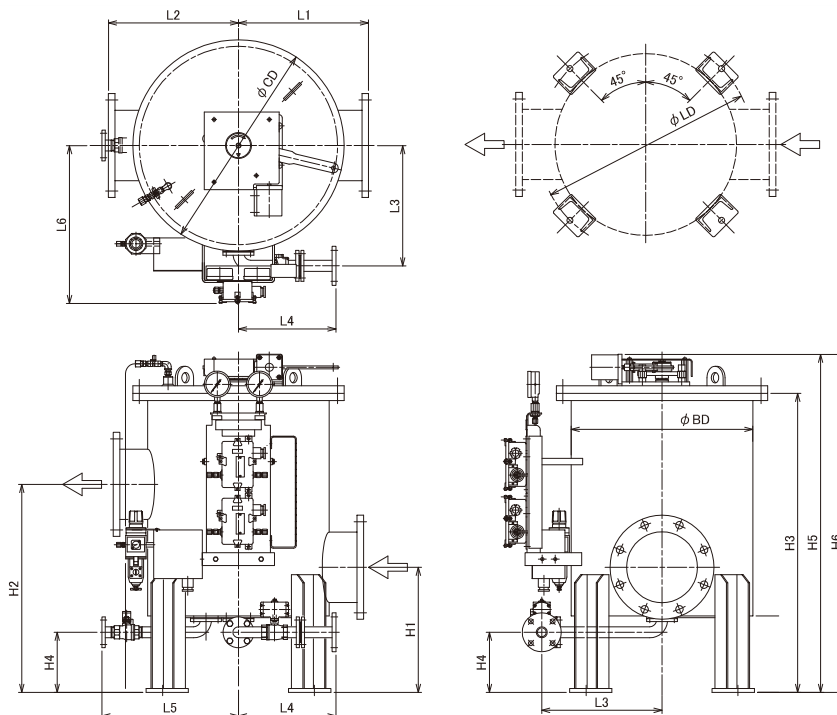
NC No.75 LO-Maxfilter LA3-1010 to 4040

Purpose L.O. 2ND BACK-WASHING FILTER for M/E & CAM SHAFT



CONNECTING FLANGE : JIS5K

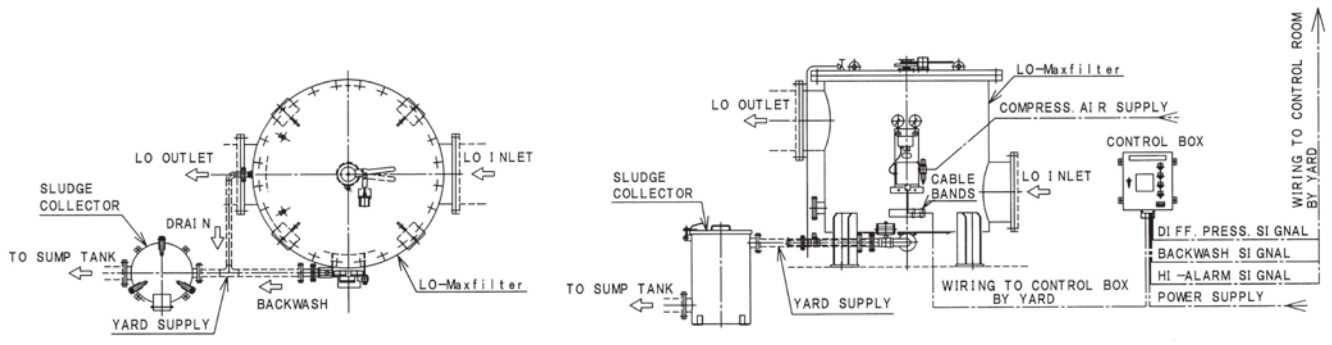
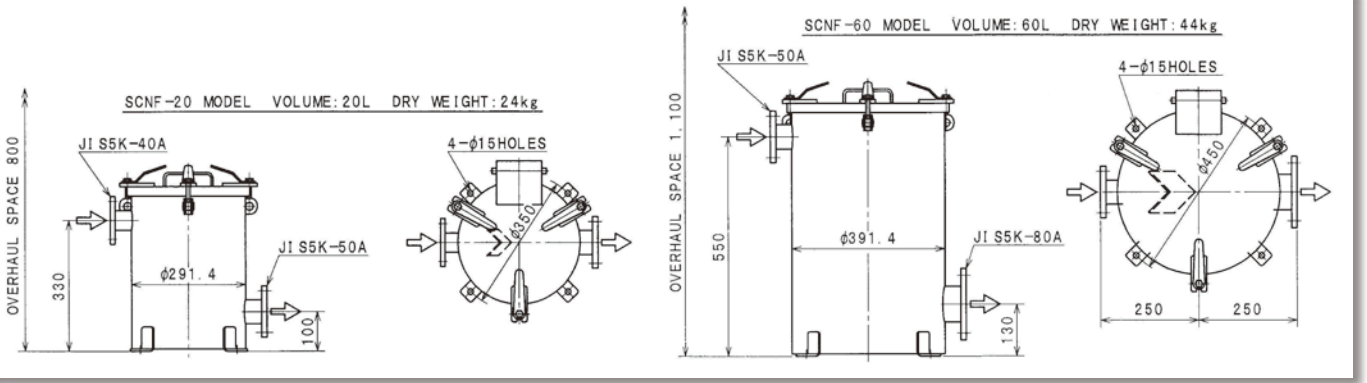
MODEL	L1	L2	L3	L4	L5	L6	H1	H2	H3	H4	H5	H6	CD	BD	LD	HOLD CAPA.	DRY WEIGHT
LA3 SLL-1010*NN	275	275	270	300	300	395	340	500	700	185	1000	1100	460	355	460	40L	165kg
LA3 SLL-1313*NN	320	320	320	300	370	460	350	530	750	185	1000	1150	560	457	560	80L	240kg
LA3 SLL-1515*NN	320	320	320	300	370	460	360	560	880	185	1000	1400	560	457	560	100L	250kg
LA3 SLL-1820*NN	360	360	350	300	390	490	385	620	948	185	1070	1500	665	559	610	170L	415kg
LA3 SLL-2220*NN	400	400	370	300	420	515	415	710	948	185	1070	1500	725	610	660	190L	450kg
LA3 SLL-2525*NN	470	470	490	300	490	580	415	710	1000	185	1125	1500	840	711	810	280L	535kg
LA3 SLL-3030*NN	550	550	560	320	570	660	445	800	1100	165	1245	1600	1000	864	1000	480L	700kg
LA3 SLL-3535*NN	620	620	600	320	620	710	480	900	1200	165	1345	1700	1140	960	1090	620L	1050kg
LA3 SLL-4040*NN	720	720	670	320	700	780	520	980	1300	165	1445	1800	1280	1100	1240	950L	1370kg



NC No.75SC SLUDGE COLLECTOR for LO-Maxfilter



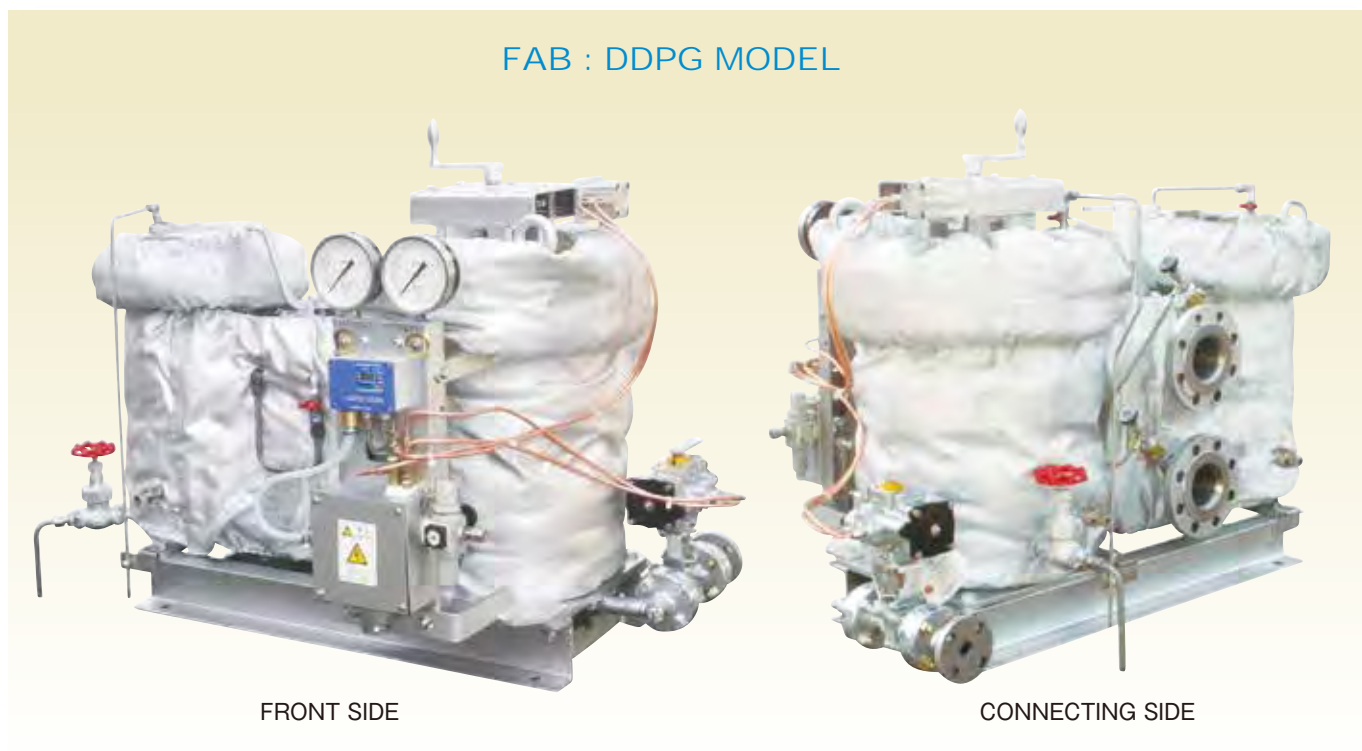
SCNF-60



NC No.75FO FO-Maxfilter

Purpose F.O. 2ND & 3RD BACK-WASHING FILTER for M/E & G/E

FAB : DDPG MODEL



ELEMENT : Nominal 10μ to Abs. 50μ
 PRESSURE DROP : 0.01MPa at VISCOSITY : 20 cSt
 CONN. FLANGE : JIS 16K RF
 With STEAM HEATING UNIT and INSULATION

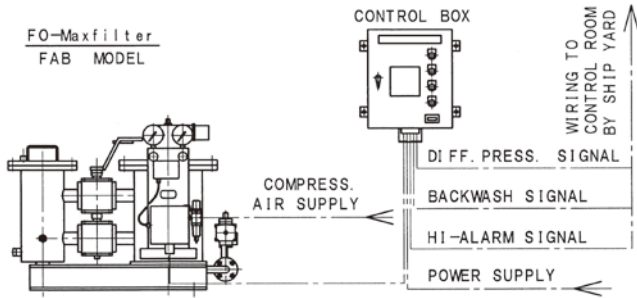
MODEL	FLOW RATE m ³ /h	
F (A,M) B,M - 25	1.0	~ 2.3
F (A,M) B,M - 40	2.3	~ 5.9
F (A,M) B,M - 65	5.9	~ 15.5
F (A,M) B,M - 80	15.5	~ 30.8

MODEL	"A"	L1	L2	L5	L7	L8	L9	L10	H1	H2	H3	H4	HOLD CAPA. L	WEIGHT kg
FA-25	25A	180	210	85	110	266	163	400	185	150	115	170	10	120
FA-40	40A	220	225	100	125	293	193	420	205	175	115	170	18	145
FA-65	65A	250	250	125	150	319	218	440	205	215	140	170	31	190
FA-80	80A	310	300	175	200	362	258	490	225	240	150	175	56	280

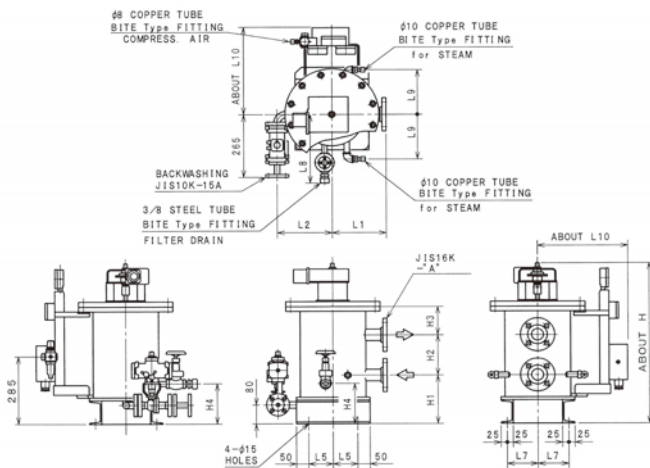
MODEL	"A"	L1	L2	L3	L4	L5	L6	L7	L8	L9	L10	L11	H1	H2	H3	H4	HOLD CAPA. L	WEIGHT kg
FAB-25	25A	150	210	235	185	85	420	110	266	180	150	400	185	150	115	170	13	170
FAB-40	40A	175	225	280	210	100	490	125	293	210	170	420	205	175	115	170	25	230
FAB-65	65A	200	250	325	255	125	580	150	319	235	200	440	205	215	140	170	43	330
FAB-80	80A	250	300	400	320	175	720	200	362	275	220	490	220	240	150	175	80	485

NOTE: The Model of FAM which combined AUTO BACK-WASHING FILTER and MANUAL BACK-WASHING FILTER is also prepared.

NC No. 78 FLOW TURN STRAINER

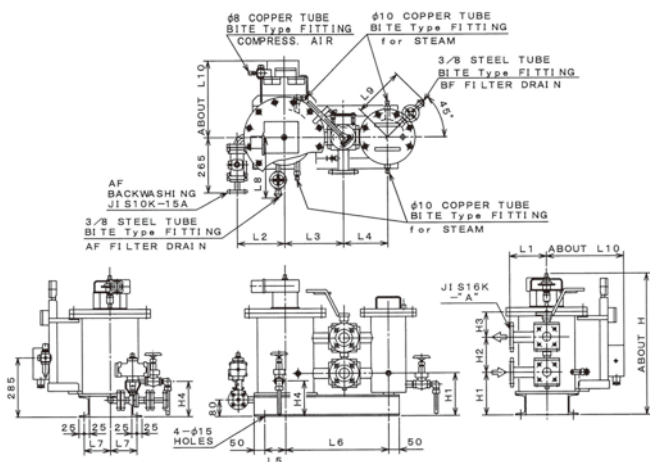


1. MODEL : FA SERIES
FM SERIES dimension is same FA SERIES.

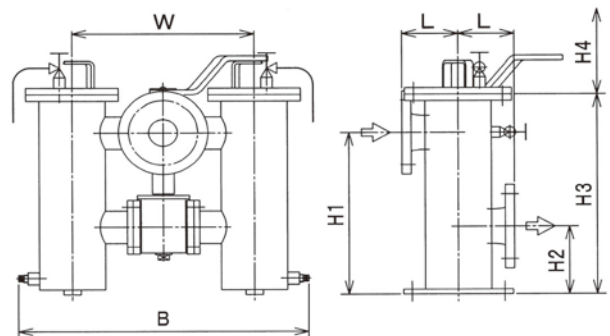


FTS-CG MODEL :
Wire Gauze Element ----- Mesh : 20Mesh to 300Mesh
FTS-CN MODEL :
Notched Wire Element --- 50μ, 40μ, 20μ
FTS-CP MODEL :
Paper Element ----- 25μ, 20μ, 10μ
Working Condition :
Press. Max. 1.4 MPa Temp. Max. 150°C
Connecting Flange:
JIS5K, JIS10K, ANSI150lb

2. MODEL : FAB SERIES Automatic Back-washing filter with manual by-pass filter
: FMB SERIES dimension is same FAB SERIES.



MODEL	SIZE	L	H1	H2	H3	H4	W	B	WEIGHT (kg)
FTS-CG010-25H	25	74	210	75	275	255	255	415	25
FTS-CG010-40H	40	89	250	85	325	305	305	490	43
FTS-CG010-50H	50	92	300	125	380	360	315	500	52
FTS-CG010-65H	65	112	360	150	455	430	360	590	70
FTS-CG010-80H	80	127	400	180	510	485	405	660	100
FTS-CG010-100H	100	132	470	210	600	570	510	830	150



NC No.92

EMERGENCY SHUT-OFF VALVES & AIR RESERVOIR

Purpose Marine use on tanks containing fuel oil, lub oil. Oil and other flammable oil which are required to have valves closed from safe positions outside the space concerned.

Features M/E & G/E F.O. Inlet line Quick closing. Operates certainly. Compact and light weight.

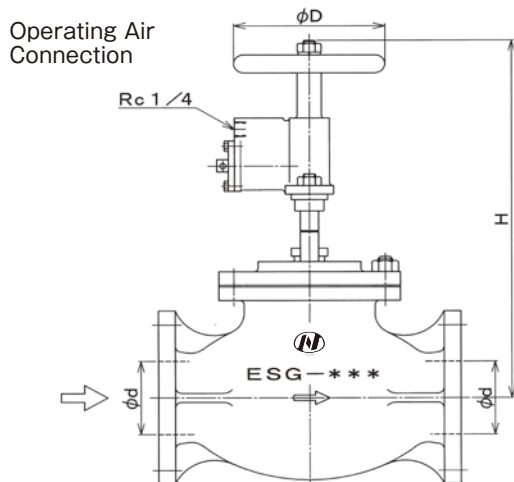


MODEL	d	L	H	D	kg
ESG-25	25	120	265	100	7
ESG-40	40	160	270	100	11
ESG-50	50	210	270	100	15
ESG-65	65	250	320	125	20
ESG-80	80	280	325	125	25
ESG-100	100	340	410	160	35
ESG-125	125	410	430	160	45
ESG-150	150	480	460	160	65
ESG-200	200	570	615	315	100
ESG-250	250	740	655	315	135

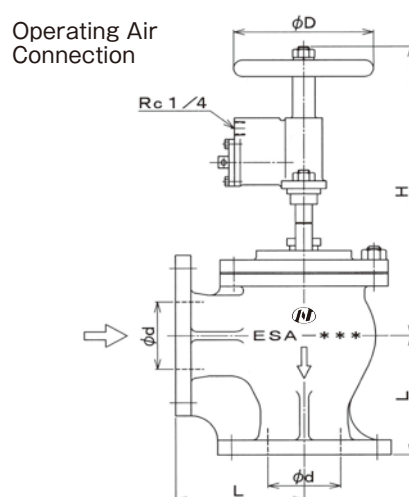


MODEL	d	L	H	D	kg
ESA-25	25	120	265	100	7
ESA-40	40	160	270	100	10
ESA-50	50	210	270	100	14
ESA-65	65	250	320	125	18
ESA-80	80	280	325	125	22
ESA-100	100	340	410	160	30
ESA-125	125	410	430	160	42
ESA-150	150	480	460	160	50
ESA-200	200	570	615	315	85
ESA-250	250	740	655	315	115

MODEL : ESG GLOVE TYPE

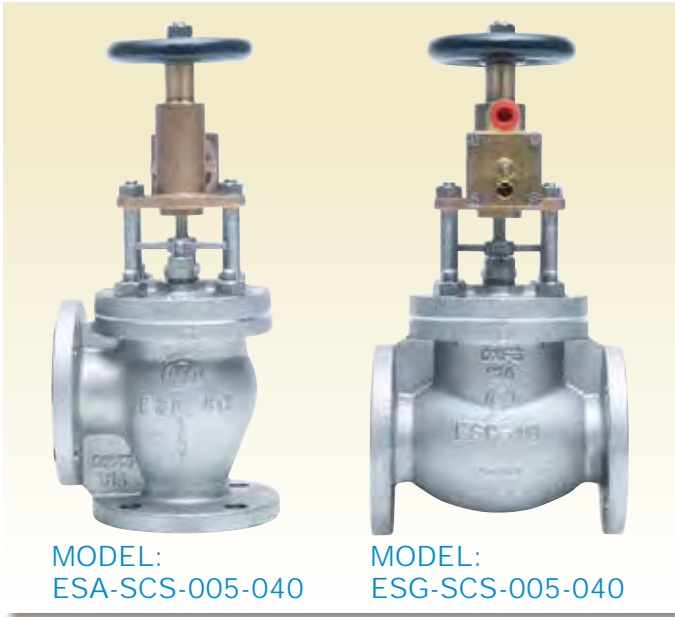


MODEL : ESA ANGLE TYPE



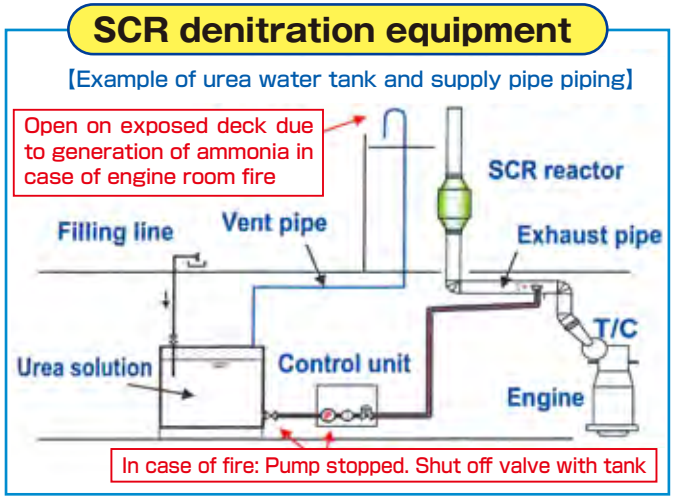
NEW PRODUCT

Emergency Shut-off Valve(Stainless Steel)



MODEL:
ESA-SCS-005-040

MODEL:
ESG-SCS-005-040



Reference: ClassNK "Study on certification technology for NOx emission regulations"

ESA-SCS-005-015-040

DIMENSION TABLE

MODEL	φ d	L	H	D	B	t	I	WEIGHT (kg)
ESA-SCS-005-015	15	65	245	100	82	5	9	8
ESA-SCS-005-020	20	66	245	100	82	5	9	8
ESA-SCS-005-025	25	66	245	100	82	5	9	8
ESA-SCS-005-040	40	80	240	100	82	6	14	11

ESA-SCS-010-015-040

DIMENSION TABLE

MODEL	φ d	L	H	D	B	t	I	WEIGHT (kg)
ESA-SCS-010-015	15	83	245	100	82	6	9	10
ESA-SCS-010-020	20	85	245	100	82	6	9	10
ESA-SCS-010-025	25	85	245	100	82	6	9	10
ESA-SCS-010-040	40	100	240	100	82	7	14	11

ESG-SCS-005-015-040

DIMENSION TABLE

MODEL	φ d	L	H	D	B	t	I	WEIGHT (kg)
ESG-SCS-005-015	15	122	265	100	82	5	9	8
ESG-SCS-005-020	20	123	265	100	82	5	9	8
ESG-SCS-005-025	25	123	265	100	82	5	9	8
ESG-SCS-005-040	40	180	270	100	82	6	14	12

ESG-SCS-010-015-040

DIMENSION TABLE

MODEL	φ d	L	H	D	B	t	I	WEIGHT (kg)
ESG-SCS-010-015	15	128	265	100	82	6	9	10
ESG-SCS-010-020	20	132	265	100	82	6	9	10
ESG-SCS-010-025	25	132	265	100	82	6	9	10
ESG-SCS-010-040	40	170	270	100	82	7	14	13

AIR RESERVOIR

ESD TYPE

VOLUME : 40L,60L,100L,120L,150L

CONTROL DEVICE

ESD-P-2 : For 2 Lines

ESD-P-3 : For 3 Lines

ESD-P-4 : For 4 Lines

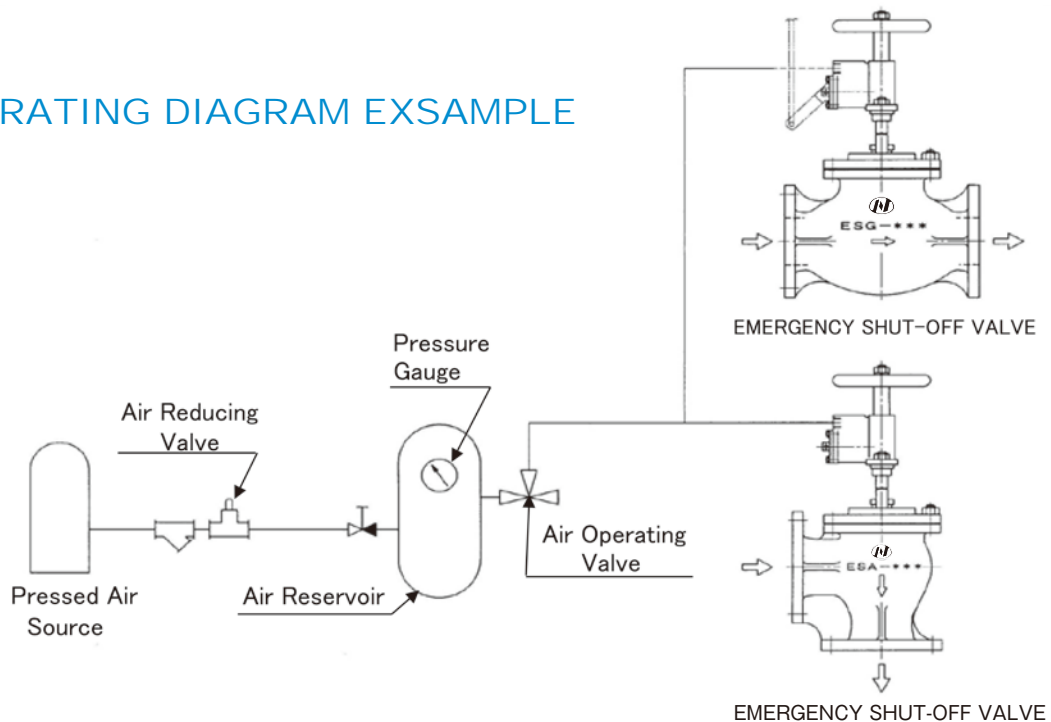
60 L TYPE for 2 Lines



ESD-P-4 TYPE



OPERATING DIAGRAM EXSAMPLE



NC No.84 AUTO DEGAS FLOAT VALVE

ADFV-10K-25



Body Material : FCD400
 Mounting Flange : JIS 10K-125A
 Discharge Flange : JIS 10K-25A

ADFV-16K-25



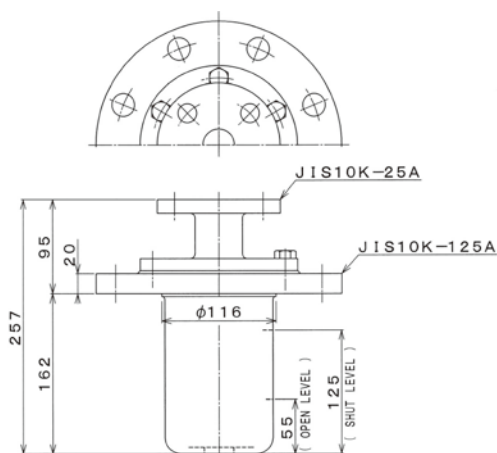
Body Material : SS400
 Mounting Flange : JIS 16K-125A
 Discharge Flange : JIS 16K-25A

Purpose Fuel oil vapor venting valve for pressurized fuel oil system.

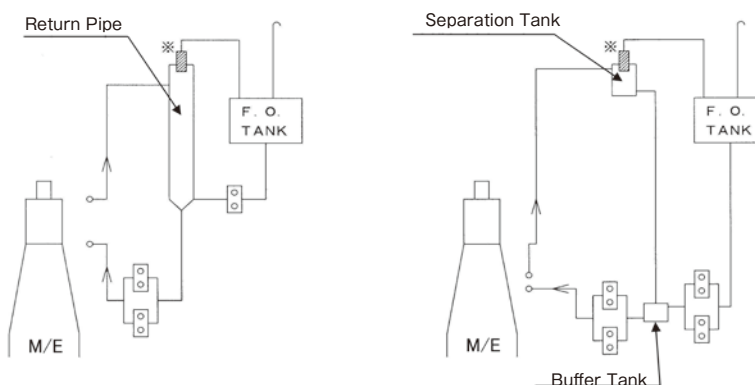
Features Keeps fuel system vapor free without causing pressure fluctuations in the piping system at venting, and unaffected by pitch and rolling. Available in various suitable for a fuel system fitted with separation tank or return pipe. The construction is rugged and simple parts which are consist of a PTFE seat, a stainless needle valve and a float.

Design / Construction

The Venting valve comprises buoyance and gravity of a float combined with a needle valve and the valve installed in the highest point in a closed loop fuel recirculation system to be kept in pipe at 0.9MPa pressure.



SYSTEM EXAMPLE



FLOAT CHECK VALVE

NC No.38B FLOAT CHECK VALVE for VACUUM BREAKER

NC No.38B FLOAT CHECK VALVE for F.O. OVER FLOW PIPE

Purpose Preventing of back flow for Over flow piping.

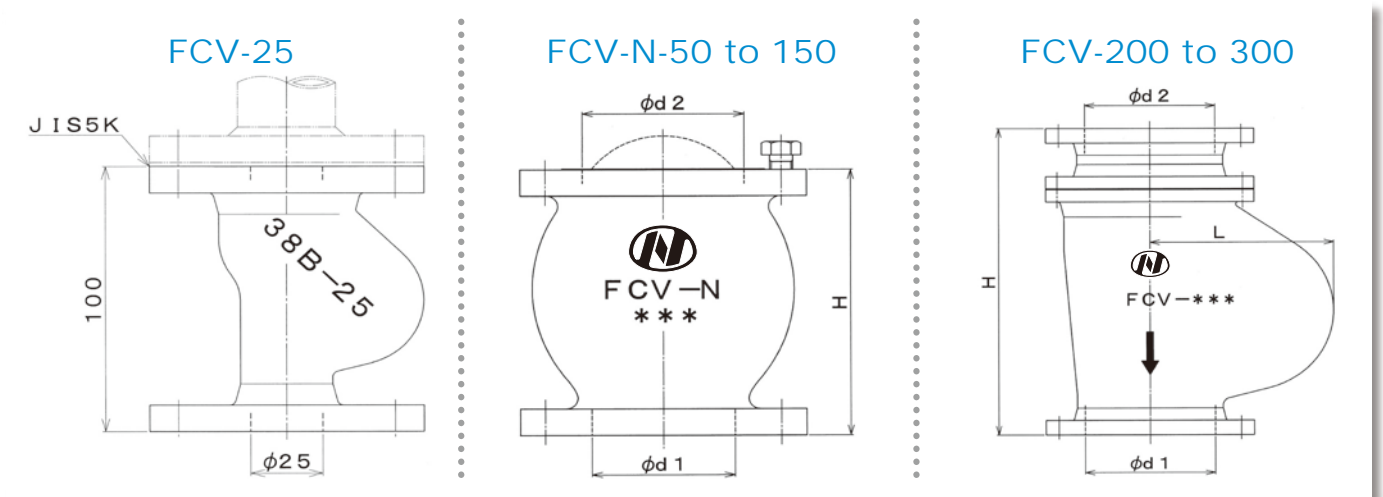
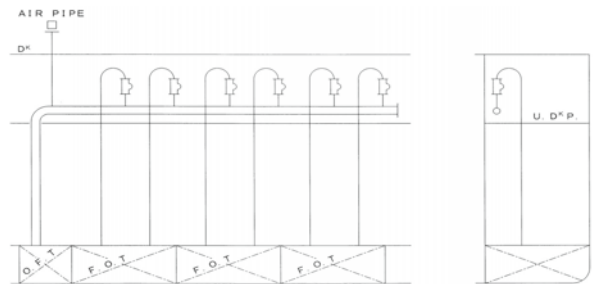
Features Ball float type.Fitting of vertical piping.

CASE 1 Engine room over flow piping from double bottom



MODEL	d1	d2	d3	L	H	kg
FCV-N- 50	50	60	70	---	120	4.5
FCV-N- 65	65	76	95	---	150	7
FCV-N- 80	80	88	105	---	180	9
FCV-N-100	100	223	125	---	200	13
FCV-N-125	125	139	155	---	250	18
FCV-N-150	150	160	185	---	290	29
FCV-200	200	200	230	285	505	72.5
FCV-250	250	250	300	370	600	120
FCV-300	300	300	350	435	680	170

Container ship over flow system (for damage stability)





NC No.17 STORM VALVE

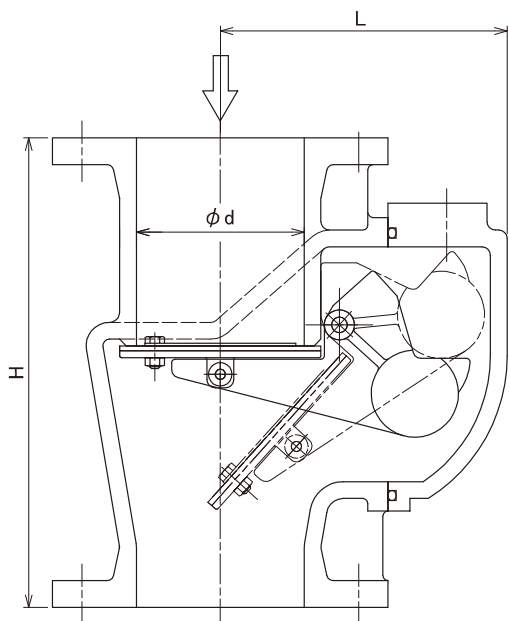
Purpose Scupper and sanitary discharges as closing appliances.



Vertical & Horizontal Type

SV II -FCD 50mm to 200mm

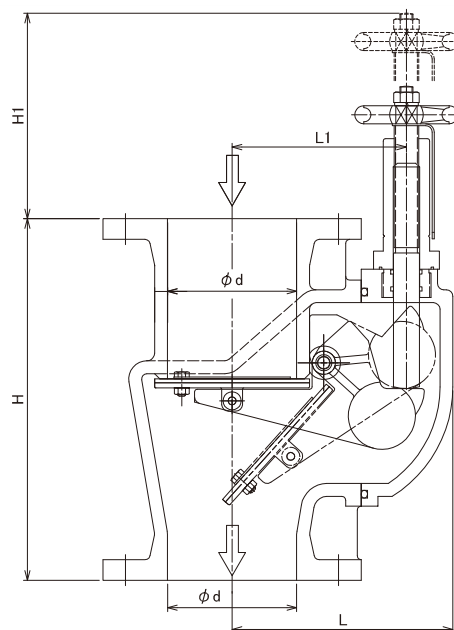
MODEL	Φd	H	L	kg
SV II -FCD- 50	50	210	130	10
SV II -FCD- 65	65	240	140	14
SV II -FCD- 80	80	260	155	18
SV II -FCD-100	100	280	170	23
SV II -FCD-125	125	330	185	35
SV II -FCD-150	150	360	215	50
SV II -FCD-200	200	450	257	78



Vertical & Horizontal Type with handle

SV II -FCD-RMH 50mm to 200mm

MODEL	Φd	H	L	L1	H1	kg
SV II -FCD-RMH- 50	50	210	130	100	180	12
SV II -FCD-RMH- 65	65	240	140	110	182	16
SV II -FCD-RMH- 80	80	260	155	120	170	20
SV II -FCD-RMH-100	100	280	170	135	166	25
SV II -FCD-RMH-125	125	330	185	150	190	38
SV II -FCD-RMH-150	150	360	215	180	185	53
SV II -FCD-RMH-200	200	450	257	210	239	82



NC No.17 STORM VALVE

Purpose Scupper and sanitary discharges as closing appliances.



Angle Type

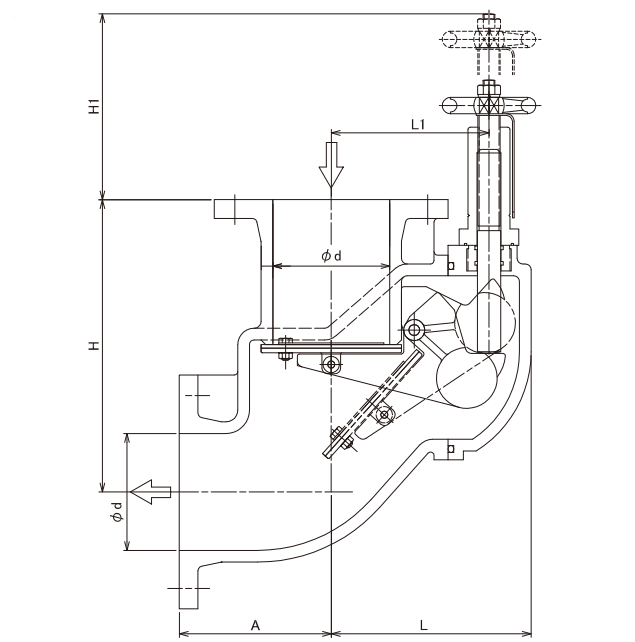
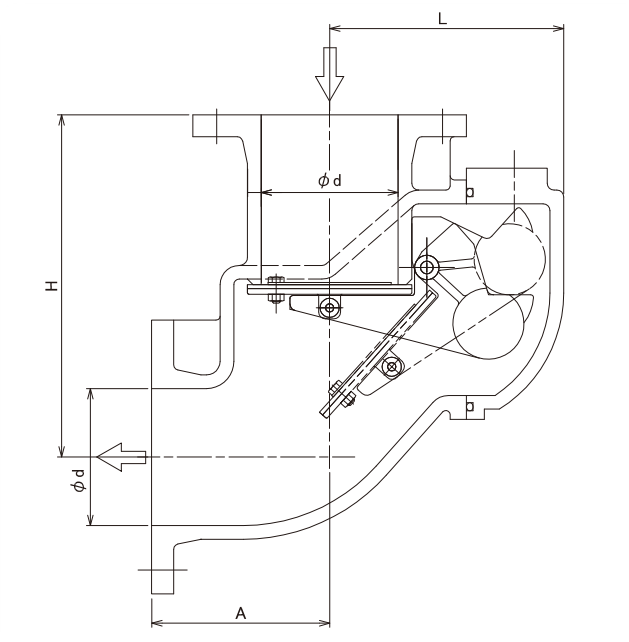
SV II - FCD - A 50mm to 200mm

MODEL	Φd	H	A	L	kg
SV II - FCD - A - 50	50	170	90	130	10
SV II - FCD - A - 65	65	200	110	140	15
SV II - FCD - A - 80	80	220	120	155	19
SV II - FCD - A - 100	100	250	130	170	25
SV II - FCD - A - 125	125	270	150	185	37
SV II - FCD - A - 150	150	310	165	215	53
SV II - FCD - A - 200	200	400	190	257	85

Angle Type with handle

SV II - FCD - A - RMH 50mm to 200mm

MODEL	Φd	H	A	L	L1	H1	kg
SV II - FCD - A - RMH - 50	50	170	90	130	100	180	12
SV II - FCD - A - RMH - 65	65	200	110	140	110	182	17
SV II - FCD - A - RMH - 80	80	220	120	155	120	170	21
SV II - FCD - A - RMH - 100	100	250	130	170	135	166	27
SV II - FCD - A - RMH - 125	125	270	150	185	150	190	40
SV II - FCD - A - RMH - 150	150	310	165	215	180	185	56
SV II - FCD - A - RMH - 200	200	400	190	257	210	239	89



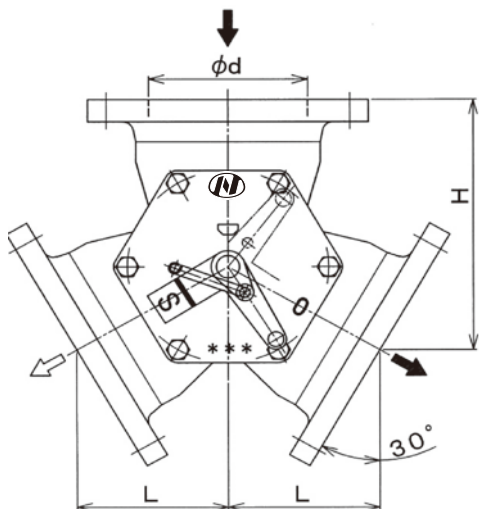
NC No.82 SOIL LINE BRANCH

Purpose Change for discharge line of overboard and sewage treatment tank.

Features Non accumulation and non space. Easy operation.



MODEL	ϕd	H	L	kg
SLB-100	100	190	113	28
SLB-125	125	218	126	42
SLB-150	150	248	143	52



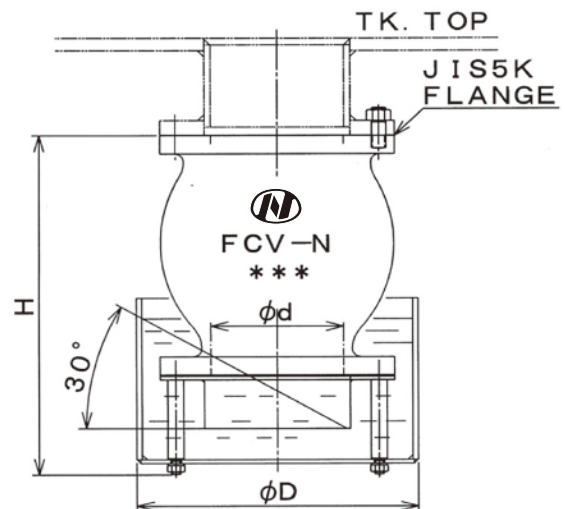
NC No. FCV-N-T FLOAT CHECK VALVE for REEFER CARRIER

Purpose : Bilge discharge for cargo hold.

Features : Prevention flow back and stopping odor.



MODEL	d	H	D	kg
FCV-N-T 80	80	258	216.3	16
FCV-N-T 100	100	303	267.4	22
FCV-N-T 150	150	415	318.5	50



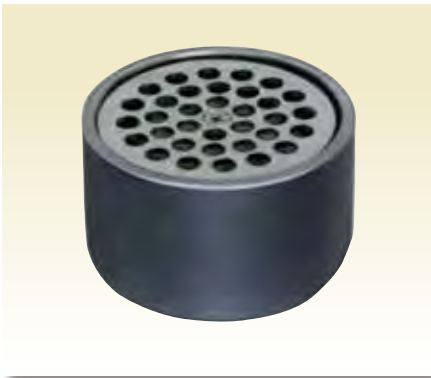
NC No.40 SCUPPER TRAP

Purpose Water seal for scupper holes of living quarter.



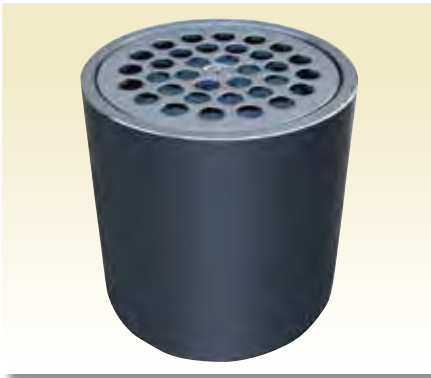
STA MODEL

MODEL	Nominal DIA.	D	Φd	H	h1	kg
STA-40	40	114.3	48.6	135	70	3.3
STA-50	50	139.8	60.5	140	75	4.7
STA-65	65	165.2	76.3	150	90	7



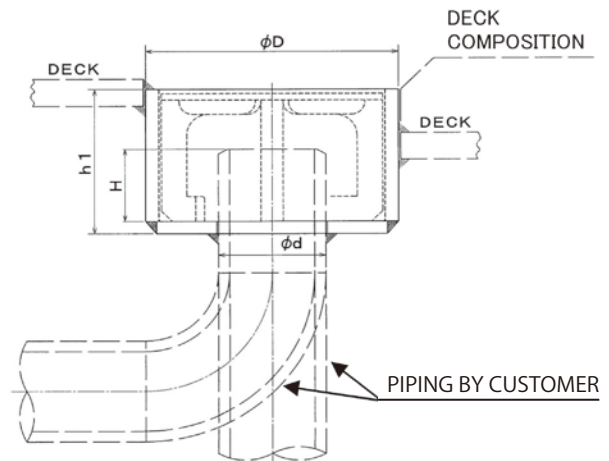
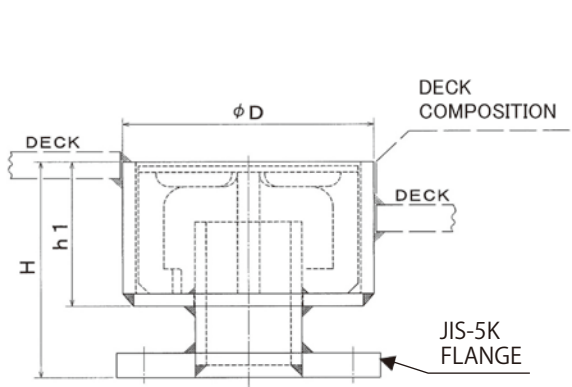
STB MODEL

MODEL	Nominal DIA.	D	Φd	H	h1	kg
STB-40	40	114.3	49.1	35	70	1.6
STB-50	50	139.8	61.1	40	75	2.3
STB-65	65	165.2	77.1	50	90	3.5



STB-DOT MODEL

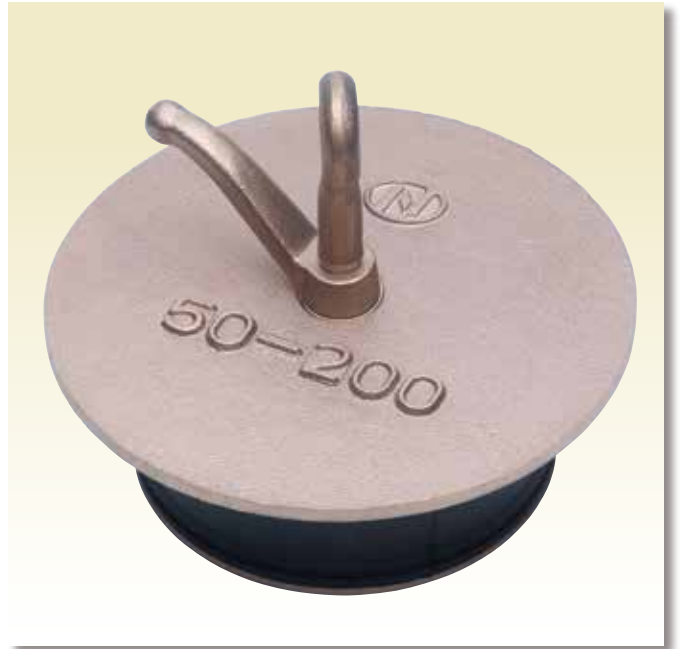
MODEL	Nominal DIA.	D	Φd	H	h1	kg
STB-40-DOT	40	114.3	49.1	92	127	2.7
STB-50-DOT	50	139.8	61.1	92	127	3.7
STB-65-DOT	65	165.2	77.1	95	135	5.1



NC No.50 DECK SCUPPER PLUG

Purpose Deck scupper holes as closing appliances.

Features Rubber expansion mechanism. Easy operation.

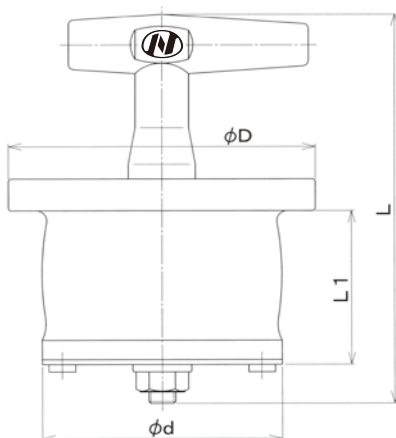


DIMENSION TABLE

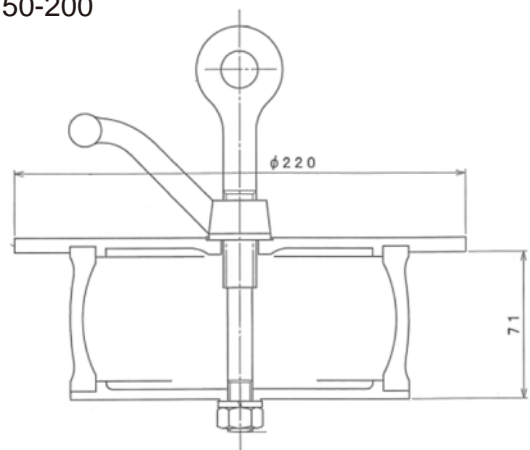
MODEL	ΦD	Φd	L	L1	WEIGHT kg
50N-50	65	45	145	55	0.3
50N-65	75	52	145	55	0.4
50N-80	85	65	160	65	0.5
50N-100B	110	85	160	65	0.6
50N-100	115	90	160	65	0.6
50N-125	135	110	160	65	0.8
50N-150	160	135	160	65	1.0

		APPLICATION LIST							
MODEL	50N-	50	65	80	100B	100	125	150	
50A 2B	Sch80	●							
	Sch40	●							
	SGP	●							
65A 2-1/2B	Sch160		●						
	Sch80		●						
	Sch40			●					
	SGP			●					
80A 3B	Sch160			●					
	Sch80			●					
	Sch40			●					
	SGP			●					
100A 4B	Sch160				●				
	Sch80				●				
	Sch40				●				
	SGP				●				
125A 5B	Sch160					●			
	Sch80					●			
	Sch40					●			
	SGP					●			
150A 6B	Sch160						●		
	Sch80						●		
	Sch40						●		
	SGP						●		

50N-65 to 150



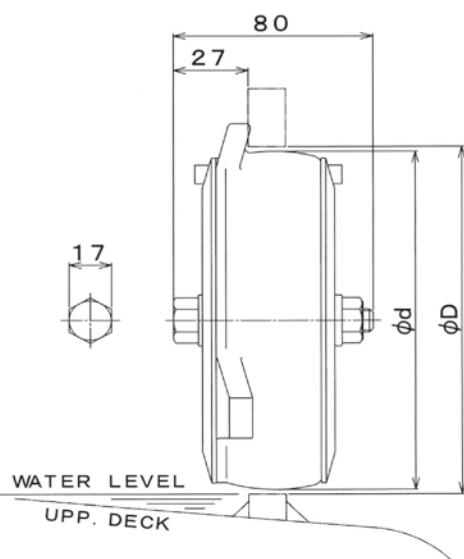
50-200



NC No.50 GUTTER PLUG



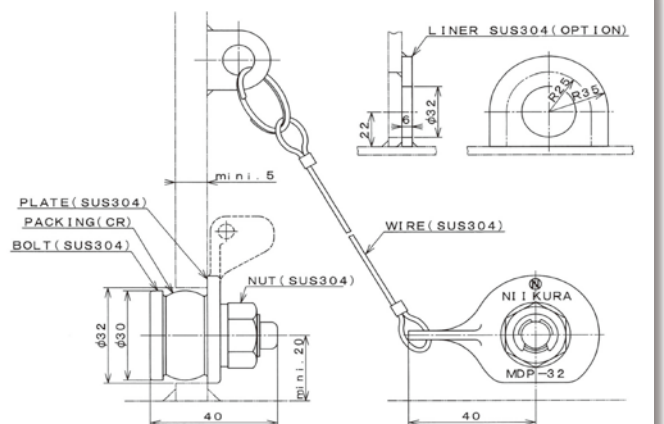
MODEL	d	D	kg
50GN-100	97	97 ~ 102	0.5
50GN-125	122	125 ~ 128	0.7
50GN-150	146	150 ~ 154	0.9



NC No.50 MINI DRAIN PLUG

Purpose Deck scupper holes as closing appliances.

Features Rubber expansion mechanism.
Easy operation. Non screw.



NC No.53 AIR VENT HEAD

Features Auto-closing appliances of ball float.

Model No. 53B(W), 53C(W) Application of IACS unified requirements P3

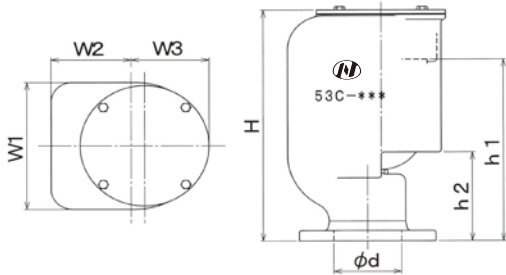
Approved by NK, ABS, LRS, DNV and BV

53C(W) MODEL SIZE : 50 to 250
Without SCREEN MODEL and with
SCREEN MODEL Limit of Pipe Velocity : 20m/s

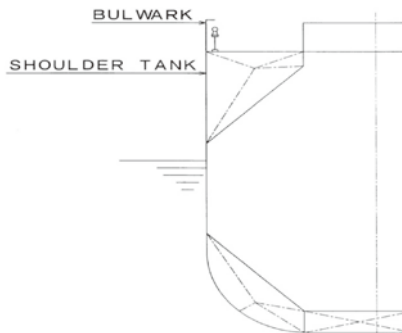


MODEL	φd	H	h1	h2	W1	W2	W3	W4	WEIGHT
53CW-50	50	261	219	113	162	92	88	-	12kg
53CW-65	65	261	219	113	162	85	96	-	12kg
53CW-80	80	298	246	123	190	98	109	-	17kg
53CW-100	100	364	284	140	202	118	116	-	20kg
53CW-125	125	433	342	180	260	192	192	151	35kg
53CW-150	150	502	390	195	302	200	224	163	51kg
53CW-200	200	641	487	264	350	253	233	249	102kg
53CW-250	250	771	593	335	453	298	280	310	145kg

CONNECTING FLANGE : JISSK



53C, 53B For Ballast Tank

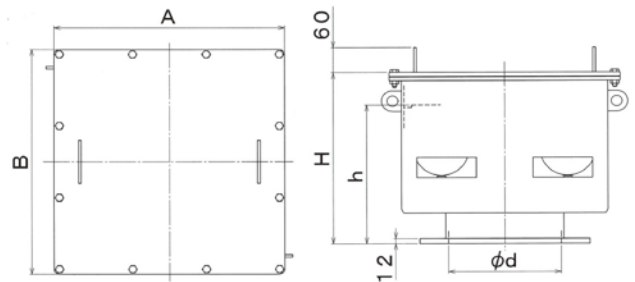


53B(W) MODEL SIZE : 300 to 450
Without SCREEN MODEL and with
SCREENMODEL Limit of Pipe Velocity : 20m/s

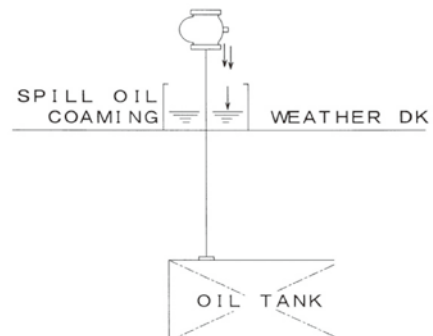


MODEL	φd	A	B	H	h	WEIGHT
53BW-300	300	613	633	466	340	130kg
53BW-350	350	669	699	499	358	158kg
53BW-400	400	719	745	531	385	180kg
53BW-450	450	853	903	635	453	255kg

CONNECTING FLANGE : JIS5K



53CW, 53BW For Oil Tanks



NC No.53 53P(W) MODEL (Shell Fitting Model) SIZE : 50 to 250 mm

Without SCREEN MODEL and with
SCREEN MODEL

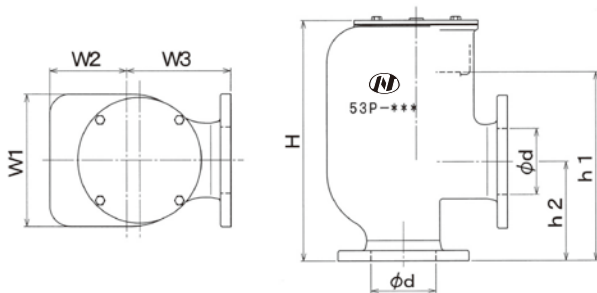
Limit of Pipe Velocity : 20 m/s

Approved by NK

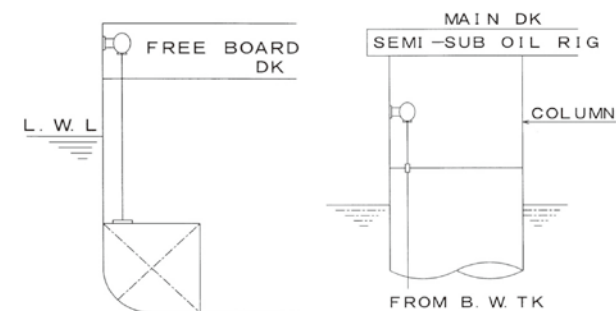


MODEL	φd	H	h1	h2	W1	W2	W3	W4	WEIGHT
53PW-50	50	264	221	112	162	92	127	—	14kg
53PW-65	65	264	221	122	162	85	132	—	15kg
53PW-80	80	300	248	132	190	98	152	—	20kg
53PW-100	100	366	286	152	202	118	162	—	25kg
53PW-125	125	435	344	197	260	192	202	151	41kg
53PW-150	150	502	392	222	302	200	242	163	60kg
53PW-200	200	640	487	282	350	253	272	249	108kg
53PW-250	250	767	589	342	453	298	332	310	182kg

CONNECTING FLANGE : JIS5K



53P Shell Fitting Model



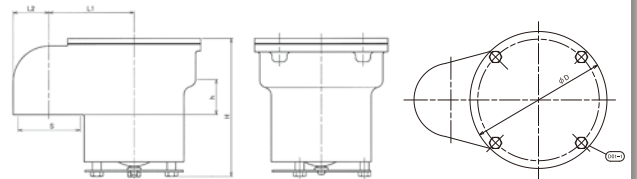
NC No.53 AIR VENT HEAD GOOSENECK MODEL

Approved by NK



DIMENSION TABLE

MODEL	S	φD	H	h	L1	L2
53G-040	G1 1/2	160	165	42	90	30
53G-050	G2	160	165	47	96	36
53G-065	G2 1/2	160	175	47	102	43
53G-080	G3	182	219	53	125	51
53G-100	G4	190	266	53	150	63
53G-125	G5	236	299	70	195	77



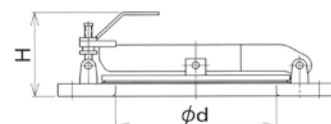
NC No. 38D DEBALLAST COVER



38D-DBC MODEL DIMENSION TABLE

MODEL	φd	φD	H1	kg
38D-DBC-200	175	320	123	13
38D-DBC-250	225	385	127	21
38D-DBC-300	275	430	127	27
38D-DBC-350	325	480	130	34
38D-DBC-400	360	540	130	42

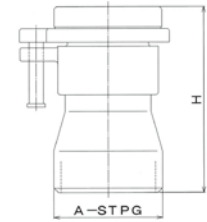
CONNECTING FLANGE : JIS5K



NC No.37AS SOUNDING PIPE HEAD



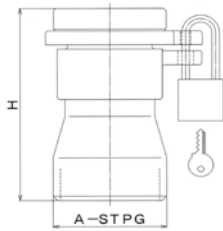
MODEL	SIZE	A	H	kg
37AS-40	40	40 (Sch80)	75	1
37AS-50	50	50 (Sch80)	105	1.1
37AS-65	65	65 (Sch40)	115	1.3
37AS-80	80	80 (Sch40)	115	1.4



with Locking
Device Models



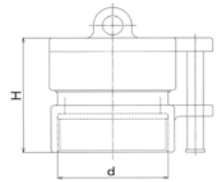
MODEL	SIZE	A	H	kg
37ASK-40	40	40 (Sch80)	75	1
37ASK-50	50	50 (Sch80)	105	1.1
37ASK-65	65	65 (Sch40)	115	1.3
37ASK-80	80	80 (Sch40)	115	1.4



NC No.37AF FILLING CAP



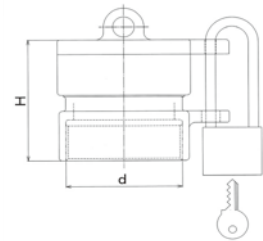
MODEL	SIZE	d	H	kg
37AF-50	50	G2	65	1.2
37AF-65	65	G2-1/2	85	1.6
37AF-80	80	G3	75	1.7
37AF-100	100	G4	91	3.0



with Locking
Device Models



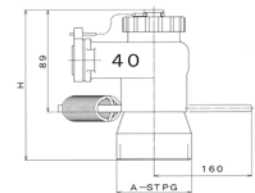
MODEL	SIZE	d	H	kg
37AFK-50	50	G2	65	1.2
37AFK-65	65	G2-1/2	85	1.6
37AFK-80	80	G3	75	1.7
37AFK-100	100	G4	91	3.0



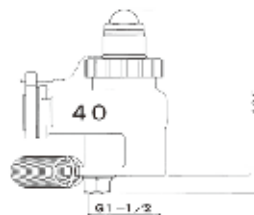
NC No.37N SELF-CLOSING GATE VALVE HEAD



MODEL	SIZE	A	H	kg
37N-40	40	40 (Sch80)	165	2
37N-50	50	50 (Sch80)	192	2.2
37N-65	65	65 (Sch40)	207	2.4
37N-80	80	80 (Sch40)	207	2.6



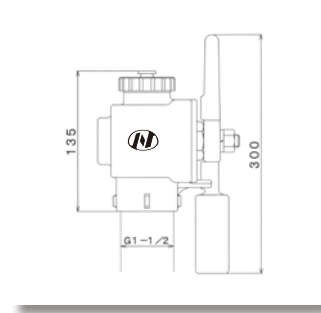
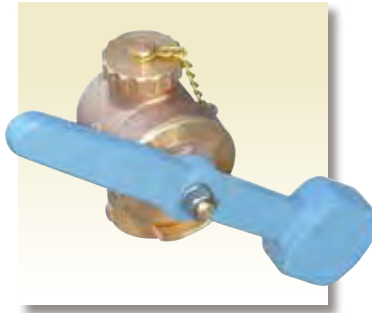
NC No.37NF SELF-CLOSING VALVE HEADS with SAFETY CHECK SIGNAL



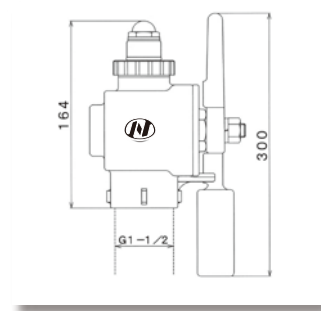
NK, ABS LRS approved

AIR PIPE & SOUNDING PIPE FITTINGS

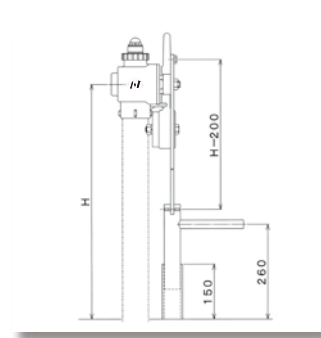
NC No. 36A-40
SELF-CLOSING
COCK HEAD



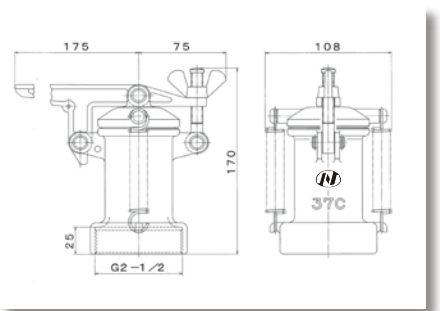
NS No. 36F-40
SELF-CLOSING
COCK HEAD



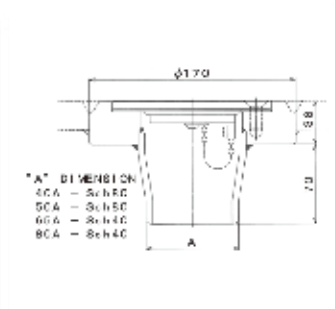
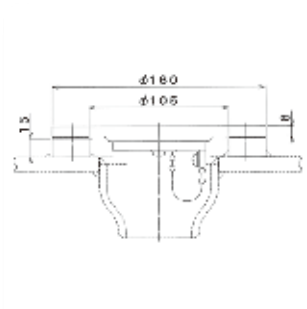
NS No. 36P-40
SELF-CLOSING
COCK HEAD with
PEDAL TYPE



NS No. 37C-65
Short sounding pipes
containing cargo oil
and chemicals.
Easy operation.



NC No. 37BN
DECK PIECE



NC No.1 HAND PISTON PUMP

Features Capable of producing high delivery head in particular. Continuous flow of double action piston moving.



BCN-25



FC(BC)-40

NC No.3 HAND PUMP

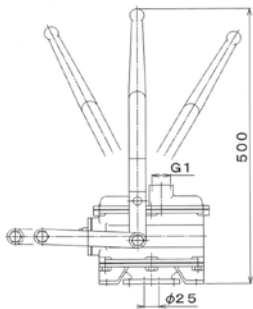
Features Bilge discharge of small ships.

Purpose With deck piece.

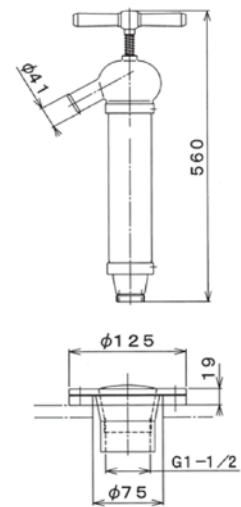
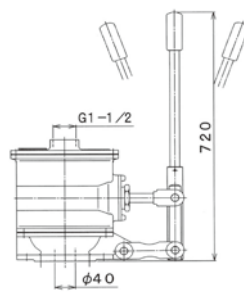
OPTION Deck Piece Handle



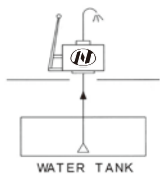
PRINCIPALS	
BORE	25mm
CYLINDER BORE	55mm
STROKE	80mm
SUCTION HEAD	- 6m
DELIVERY HEAD	10m
CAPACITY	30L/min



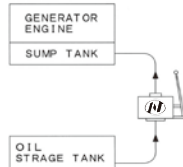
PRINCIPALS	
BORE	40mm
CYLINDER BORE	75mm
STROKE	80mm
SUCTION HEAD	- 6m
DELIVERY HEAD	10m
CAPACITY	70L/min



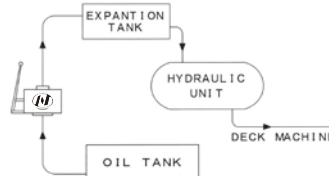
Feeding Water



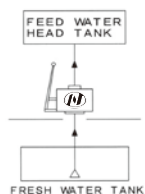
Oil Shifting for Engine



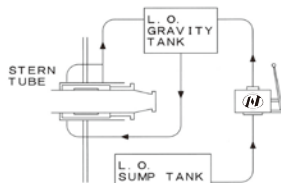
Oil Shifting for Deck Machine



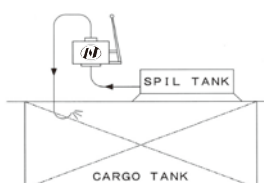
Push of Water



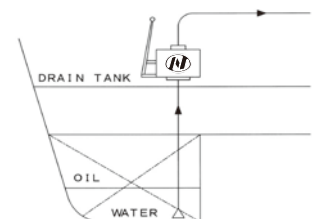
L.O. Shifting for Stern Tube



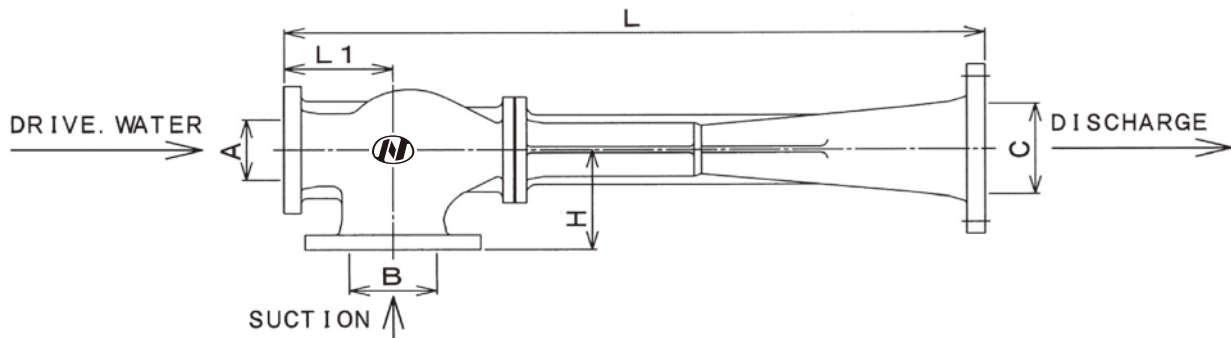
Discharging of Spill Oil



Separate Water Discharging



NC No.4 WATER JET EDUCTOR



S4B, S5B & ER-50



MODEL	SIZE	FLANGE RATE	AxBxC (mm)	SQ (m ³ /h)	DQ (m ³ /h)	L	L1	H	APPLICATION
BC-S4B	11/4x11/2x11/2	JIS5K	32x40x40	5	6 ~ 10	340	80	86	BILGE
BC-S5B	11/2x2x2	JIS5K	40x40x50	7	10 ~ 13	385	85	90	BILGE
FC(BC)-ER-50	11/2x2x21/2	JIS10K	40x50x65	10	15 ~ 30	480	105	100	BILGE

ER-65 to 125

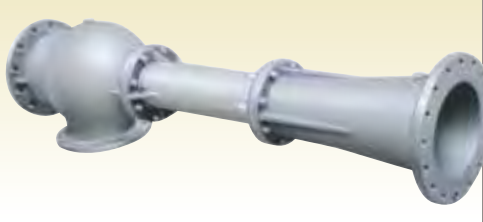


ER-150 to 250



MODEL	SIZE	FLANGE RATE	AxBxC (mm)	SQ (m ³ /h)	DQ (m ³ /h)	L	L1	H	APPLICATION
FC(BC)-ER-65	2x21/2x3	JIS10K	50x65x80	20	25 ~ 45	560	100	110	BILGE, BALLAST
FC(BC)-ER-80	21/2x3x4	JIS10K	65x80x100	30	35 ~ 65	660	115	130	BILGE, BALLAST
FC(BC)-ER-100	3x4x5	JIS10K	80x100x125	40	40 ~ 80	860	135	135	BILGE, BALLAST
FC(BC)-ER-125	4x5x6	JIS10K	100x125x150	55	65 ~ 105	1000	155	165	BILGE, BALLAST
FC(BC)-ER-150	5x6x8	JIS10K	125x150x200	100	110 ~ 200	1300	160	200	BILGE, BALLAST
FC-ER-200S	6x8x10	JIS10K	150x200x250	120	140 ~ 250	1700	200	250	BILGE, BALLAST
FC(BC)-ER-200	6x8x10	JIS10K	150x200x250	160	170 ~ 320	1960	225	275	BILGE, BALLAST
FC(BC)-ER-250	8x10x12	JIS10K	200x250x300	240	260 ~ 480	2200	290	300	BILGE, BALLAST

FCD-ER-200N to 400N



MODEL	SIZE	FLANGE RATE	AxBxC (mm)	SQ (m ³ /h)	DQ (m ³ /h)	L	L1	H	APPLICATION
FC-ER-12x8x14	12x8x14	JIS5K	300x200x350	150	642 ~ 1564	2292	276	318	BALLAST
FC-ER-14x12x16	14x12x16	JIS5K	350x300x400	200	834 ~ 1564	2550	293	317	BALLAST
FC-ER-14x12x18	14x12x18	JIS5K	350x300x450	250	1174 ~ 2269	2695	293	317	BALLAST
FC-ER-16x10x18	16x10x18	JIS5K	400x250x450	300	1174 ~ 2269	2687	300	320	BALLAST
FC-ER-16x10x20	16x10x20	JIS5K	400x250x500	350	1174 ~ 2269	2882	300	320	BALLAST
FCD-ER-200N	8x8x10	JIS16K	200x200x250	300	550 ~ 650	1885	260	250	C.O. STRIPPING
FCD-ER-250N	10x10x12	JIS16K	250x250x300	400	850 ~ 950	2155	290	280	C.O. STRIPPING
FCD-ER-300N	12x12x14	JIS16K	300x300x350	650	1100 ~ 1300	2420	300	330	C.O. STRIPPING
FCD-ER-350N	14x14x16	JIS16K	350x350x400	800	1400 ~ 1650	2670	325	370	C.O. STRIPPING
FCD-ER-400N	14x16x18	JIS16K	400x400x450	1000	1750 ~ 2000	2980	345	425	C.O. STRIPPING

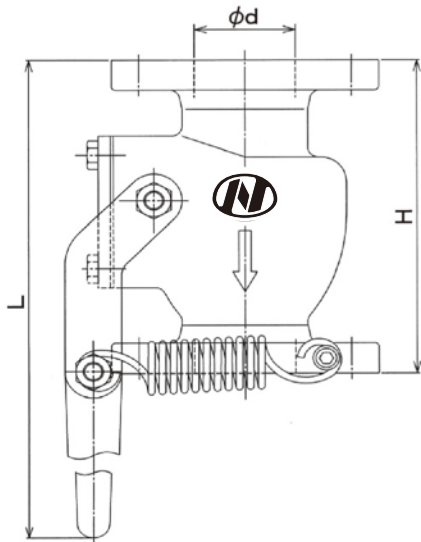
NC No.39 SELF-CLOSING VALVE

Purpose Deep tank top bilge discharge pipes as closing appliances.
CO2 gas seal for PCC's deck drain (Balance weight fitted type)



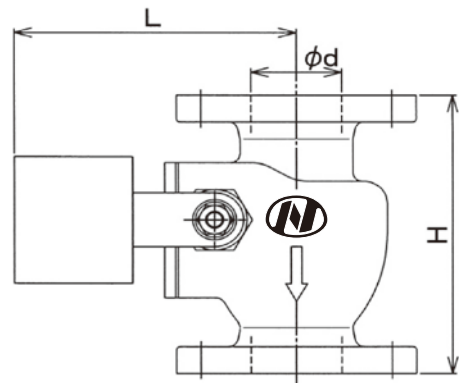
MODEL	d	H	L	kg
39A- 50	50	165	375	7
39A- 65	65	180	375	10
39A- 80	80	240	470	16
39A-100	100	280	465	23

CONNECTING FLANGE : JIS5K



MODEL	d	H	L	kg
39A-W- 50	50	165	155	8
39A-W- 65	65	180	192	12
39A-W- 80	80	240	228	20
39A-W-100	100	280	268	32

CONNECTING FLANGE : JIS5K



NC No.62 SMOOTH CHECK VALVE

Purpose This valve is installed in Bilge Well. It can act as a check valve to hold bilge suction.

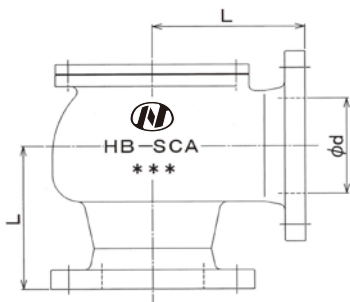
Features Designed to prevent inflow of foreign matters.

HB-SCA MODEL SIZE : 50 to 200



MODEL	d	L	kg
HB-SCA-50	50	100	8
HB-SCA-65	65	115	12
HB-SCA-80	80	130	17
HB-SCA-100	100	150	24
HB-SCA-125	125	170	35
HB-SCA-150	150	190	50
HB-SCA-200	200	220	75

CONNECTING FLANGE : JIS5K



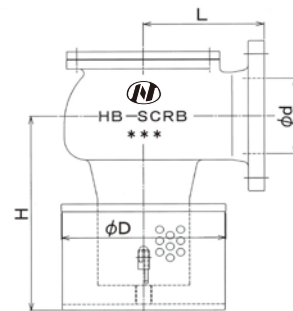
NC No.62 SMOOTH CHECK VALVE with ROSE BOX

HB-SCRB MODEL with ROSE BOX



MODEL	d	L	H	D	kg
HB-SCRB-50	50	100	163	114	8
HB-SCRB-65	65	115	183	144	12
HB-SCRB-80	80	130	218	174	17
HB-SCRB-100	100	150	258	205	24
HB-SCRB-125	125	170	298	265	35
HB-SCRB-150	150	190	333	326	50
HB-SCRB-200	200	220	428	386	75

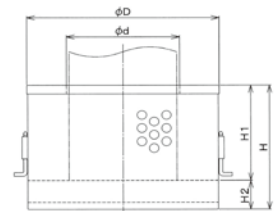
CONNECTING FLANGE : JIS5K



NC No.62RB ROSE BOX



MODEL	d	D	H1	H2	H	kg
RB-50	65	114	57	23	80	0.3
RB-65	82	144	67	28	95	0.4
RB-80	94	174	82	28	110	0.5
RB-100	120	205	107	33	140	0.8
RB-125	145	265	137	33	170	1.5
RB-150	170	326	167	33	200	2
RB-200	222	386	212	48	260	3

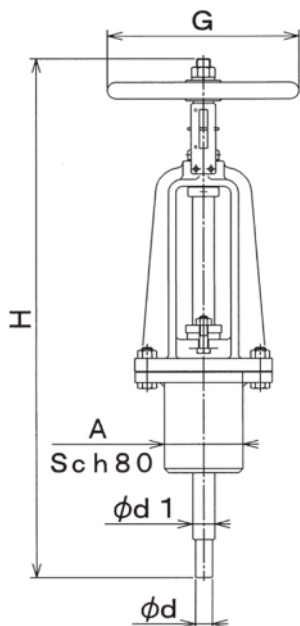


NC No.51 DECK STAND

Purpose Valve remote control.

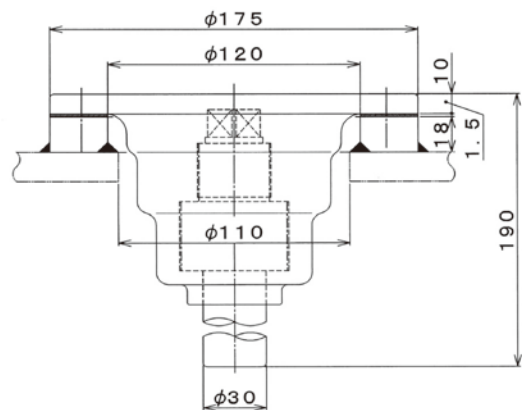
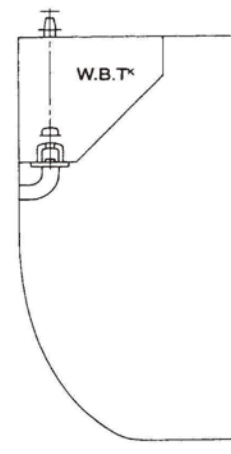


MODEL	A	G	d	d1	H	kg
D-25S	80A	200	25	25	830	19
D-25	100A	280	25	32	996	31
D-32	100A	315	32	32	996	33
D-42	125A	400	42	45	996	50



NC No.57 DECK STAND FLUSH TYPE

57N-30



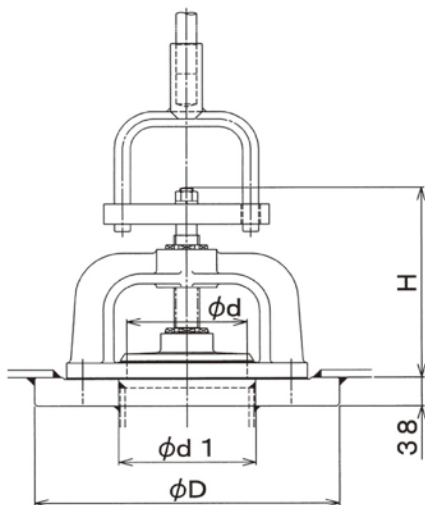
NC No.44 SURFACE VALVE

Purpose Natural de-ballasting control.

Features Perfect seal.



MODEL	d	d1	D	H
44RC-80	80	90	80	188
44RS-100	100	115.4	300	195
44RS-125	125	141.2	350	220
44RS-150	150	166.6	380	255
44RS-200	200	218	435	290
44RS-250	250	269.5	490	335
44RS-300	300	321	560	365

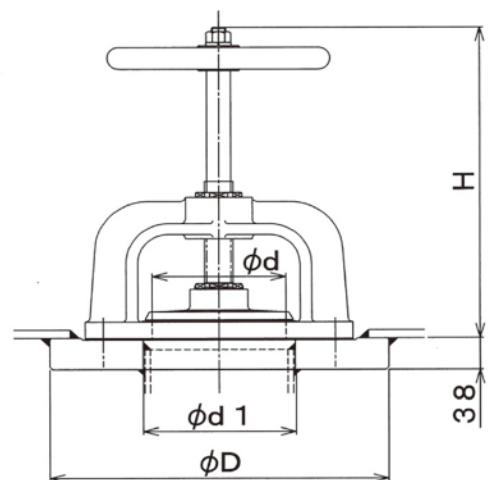


NC No. 44R-H SPILL OIL VALVE

Purpose Dropping to slop tank for spill oil.



MODEL	d	d1	D	H
44RS-H-100	100	115.4	300	350
44RS-H-125	125	141.2	350	350
44RS-H-150	150	166.6	380	450
44RS-H-200	200	218	435	450
44RS-H-250	250	269.5	490	480
44RS-H-300	300	321	560	480



NC No.111 PV01-150,200

Further safety for Bulk Carrier PV Breaker for Ballast Hold

Horizontal Position Connection

PV01's connection won't limit load capacity of ballast in hold. Moreover it won't disturb the clue's operation.

Top Cover

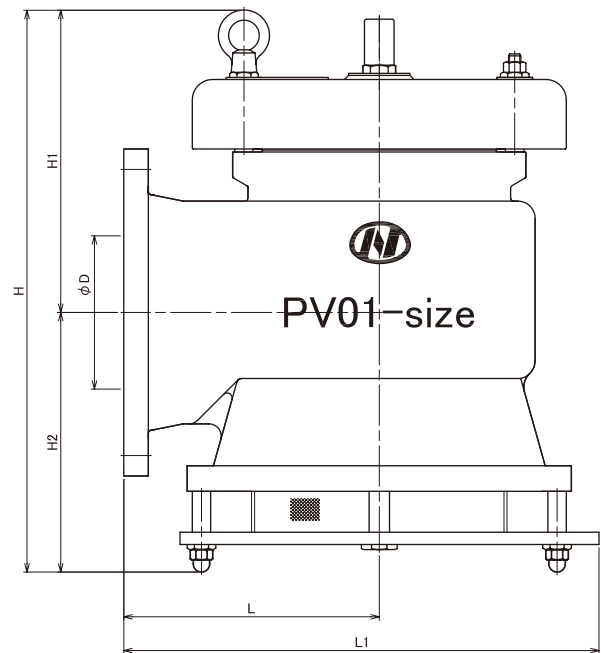
Top cover will protect PV01 against damage by falling objects. We guarantee reliably work of PV01 for long period.

Pressure Valve

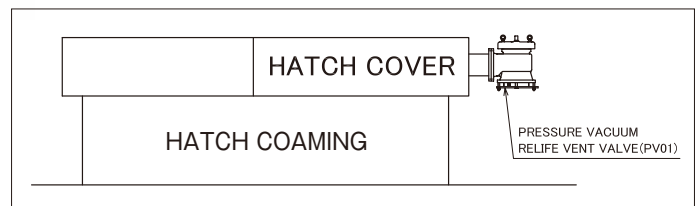
PV01 protect your vessel from danger of increasing pressure and vacuume pressure in the ballast hold.

PV01 born with NIIKURA Technology and Customer's demands

Model	D	H	H1	H2	L	L1	WEIGHT(kg)
PV01-150	150	463	256	207	204	335	47
PV01-200	200	549	250	254	250	465	67



PATENT No.5253594



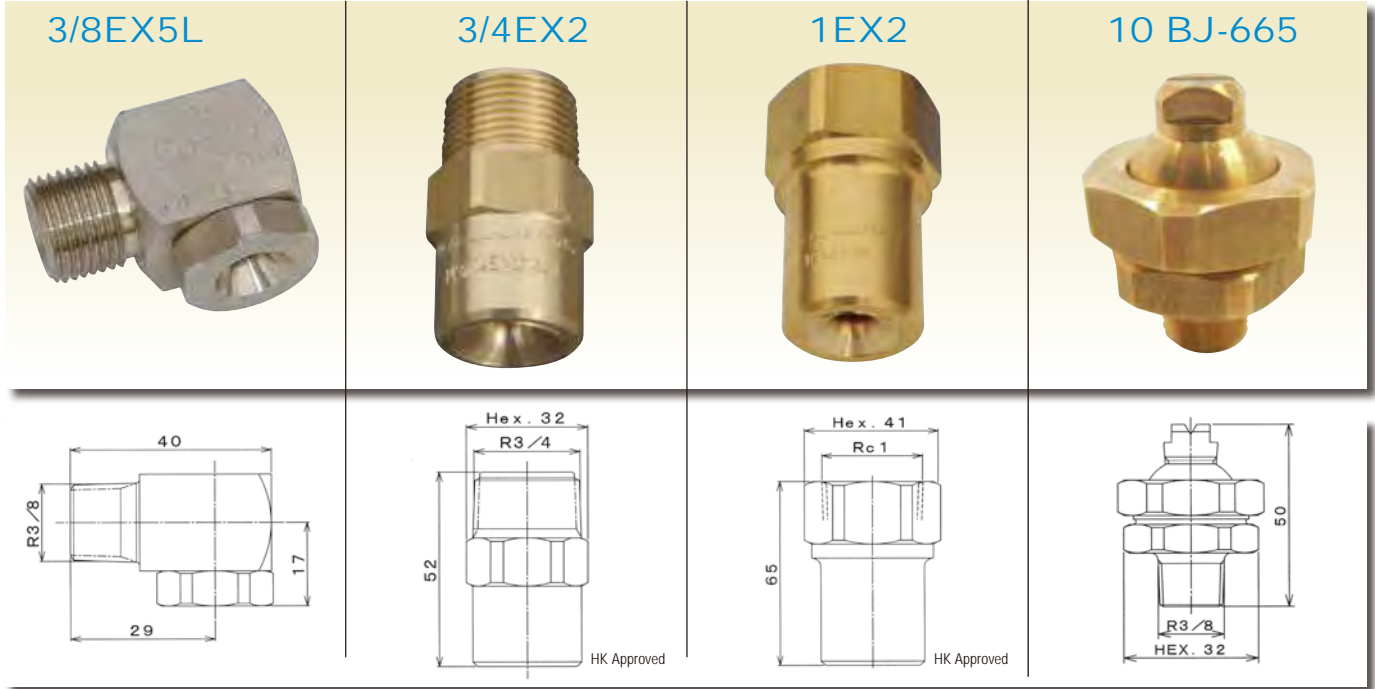
SPRAY NOZZLE AND STEAM SILENCER

NC No.107 SPRAY NOZZLE

Purpose Cargo tank cooling (EX5L Type),
Fire prevention (EX2 Type).

NC No. 65 WINDOW WASHER for WHEEL HOUSE

Purpose With ball joint for angle adjustment.



NC No.29 STEAM SILENCER

Purpose Boiling of tank.
Features Non vibration and noise.

DS MODEL MATERIAL : C3604B

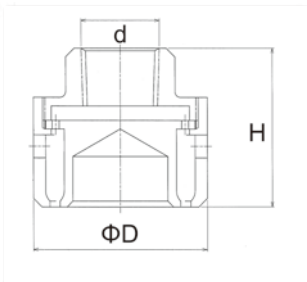


FS MODEL MATERIAL : SUS304



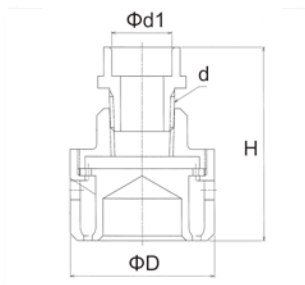
DIMENSION TABLE
STEAM PRESSURE:0.3Mpa

MODEL	d	ΦD	H	WEIGHT(kg)
DS-15A	Rc1/2	49	55	0.38
DS-20A	Rc3/4	61	55	0.53



DIMENSION TABLE

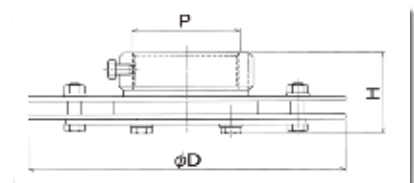
MODEL	d	Φd1	ΦD	H	WEIGHT(kg)
DS-15A	Rc1/2	20.2	49	78	0.43
DS-20A	Rc3/4	25.2	61	81	0.61



WATER : 10°C → 60°C

MODEL	FLOW RATE L/min.	STEAM CONSUMPTION
FS-SUS-25N	40	220kg/h
FS-SUS-45N	50	270kg/h
FS-SUS-50N	60	330kg/h

MODEL	P	ΦD	H	WEIGHT
FS-SUS-25N	Rc 1	135	48	1.2kg
FS-SUS-45N	Rc 1 1/2	150	50	1.4kg
FS-SUS-50N	Rc 2	190	50	1.6kg



NC No.30Z MIXING NOZZLE

Purpose Washing and melt ice water

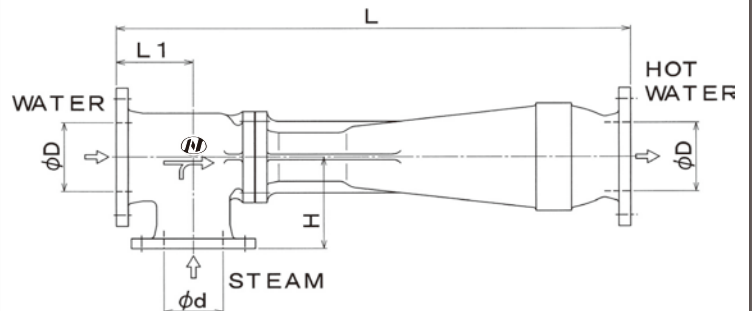
Features In line heating. Non vibration and noise.



UNIT : mm

MODEL	L	L1	H	D	D1	WEIGHT
SC-MN-2.5	220	75	80	25A	20A	5.0 kg
SC-MN-4	320	90	90	40A	25A	7.1kg
SC-MN-5	425	90	100	50A	32A	20kg
SC-MN-7	615	115	115	65A	40A	27kg
SC-MN-8	675	120	120	80A	50A	40kg
SC-MN-10A	720	120	150	100A	65A	44kg
SC-MN-13A	870	130	165	125A	100A	67kg
SC-MN-16A	1100	150	180	150A	125A	118kg
SC-MN-20A	1300	170	210	200A	150A	200kg

MODEL	FLOW RATE L/min.
SC-MN-2.5	30 to 60
SC-MN-4	60 to 120
SC-MN-5	100 to 200
SC-MN-7	165 to 330
SC-MN-8	250 to 500
SC-MN-10A	430 to 860
SC-MN-13A	800 to 1600
SC-MN-16A	1200 to 2400
SC-MN-20A	2000 to 4000





NC No.0010-090

DHV

Dual Sealing High Velocity Vent Valve



■ SPECIFICATION

MODEL	DHV - F05 - (SIZE)
SIZE	80A/100A/125A/150A/200A Connection JIS-5K
MATERIAL	FC200 (80A,100A,125A,150A,200A)
SET PRESSURE	14kPa 20kPa
APPROVED	IMO MSC/circ.677 circ.1009 ISO 15364 ,16852

SMART VALVE for Shipyard, Owner and Operator

Achieved non leakage

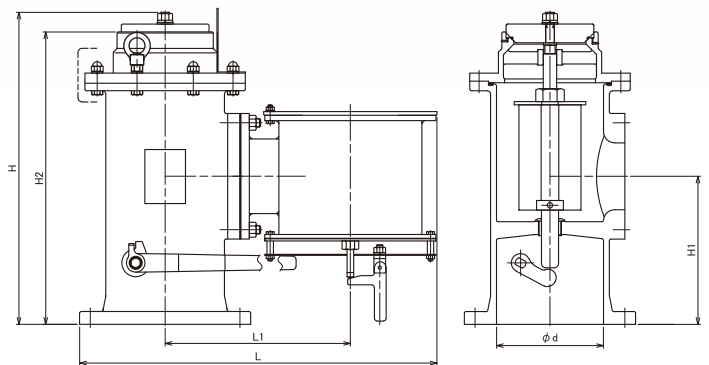
DHV has achieved non leakage. Shipyard is able to reduce their work with this design.

Reduction in running cost

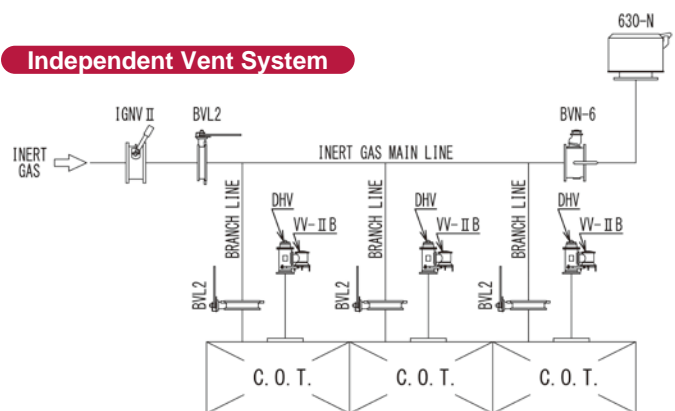
Within Approx.80% of Set Pressure, DHV will Stop Blowing. This operation will reduce waste of inert gas.

Easy Maintenance

The valve body can be opened with a one-touch handle operation. It reduces the burden of maintenance.



Independent Vent System



MODEL	FLANGE SIZE	VV SIZE	d	H1	H2	H	L1	L	WEIGHT(kg)	
									S.P. 14kPa	S.P. 20kPa
DHV-F05-08	JIS5K-125A-FF	JIS5K-80A-FF	125	199	411	439	237	455	54	58
DHV-F05-10	JIS5K-150A-FF	JIS5K-100A-FF	150	205	431	471	286	546	76	81
DHV-F05-13	JIS5K-200A-FF	JIS5K-125A-FF	200	277	547	584	349	666	117	126
DHV-F05-15	JIS5K-200A-FF	JIS5K-150A-FF	200	283	572	607	386	732	149	161
DHV-F05-20	JIS5K-250A-FF	JIS5K-200A-FF	250	320	649	690	463	889	230	251

NC No.10 HIGH VELOCITY VENTING VALVE

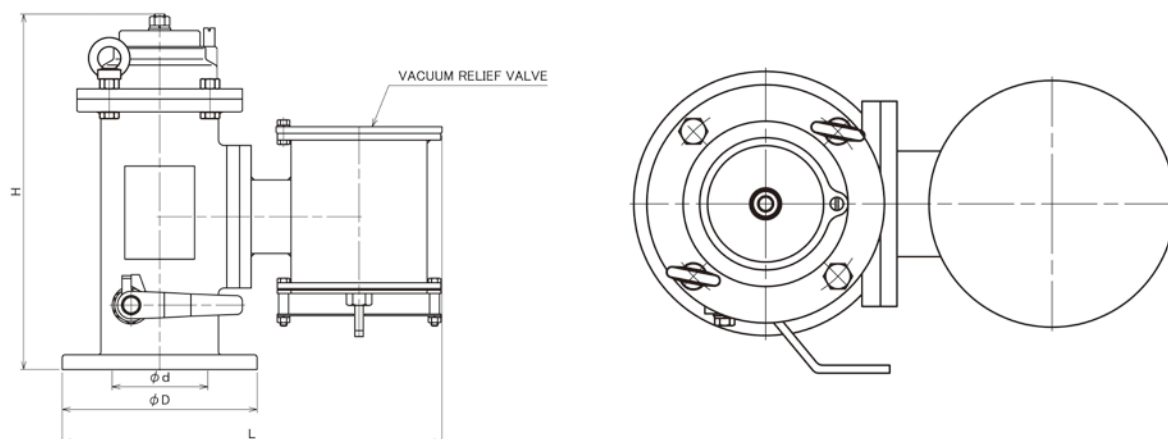
Purpose Device to prevent the passage of flame into inerted cargo tanks in oil tankers pressure during cargo loading or ballasting.

Features High velocity and full open. Automatic move. Simple mechanism. Application of IMO MSC/Circ.677. Approved by NK, ABS, LRS.



MODEL	Φd	ΦD	H	L	WEIGHT(kg)
N-NHV-SCS-65	104	200	397	405	39
N-NHV-SCS-80	125	235	447	455	54

PATENT No.5539282



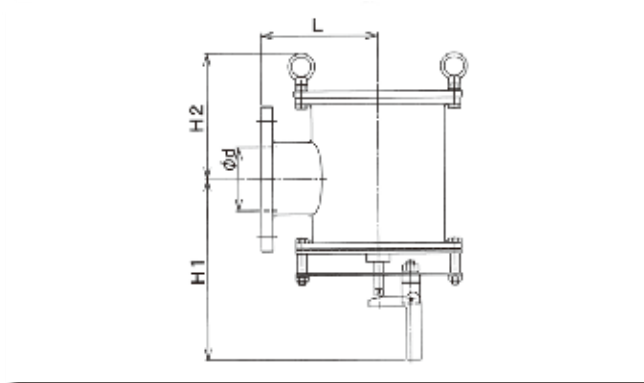
NC No.10 VACUUM RELIEF VALVE

Purpose Vacuum break of cargo tank.

Features Combined of High velocity venting valve. Incorporating flame screen. Approved by NK/ABS/LRS.



VV-E-65 to 250



SETTING PRESSURE : 3.5kPa

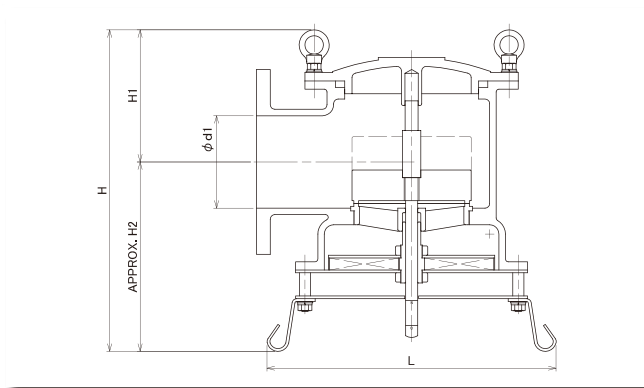
MODEL	d	L	H1	H2	FLOW RATE (Nm ³ /h)
VV-E-65	65	130	176	148	200~1,100
VV-E-80	80	145	181	152	400~1,600
VV-E-100	100	170	205	157	900~2,600
VV-E-125	125	205	217	170	1,200~4,000
VV-E-150	150	235	300	205	1,500~5,200
VV-E-200	200	285	335	245	2,000~7,500
VV-E-250	250	370	570	305	2,500~10,500

CONNECTING FLANGE : JIS5K

APPLICATION for IMO MSC/Circ. 1324 II B



VV-II B-65 to 125



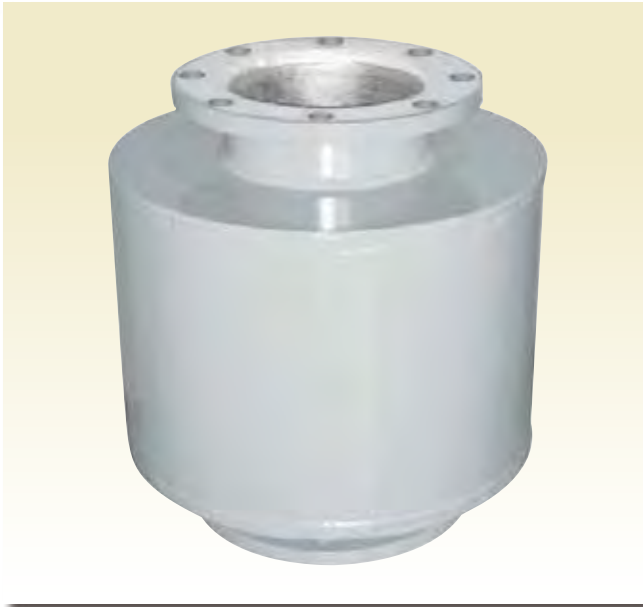
MODEL	d1	d2	d	N	D	t	B	H	H1	H2	L	WEIGHT		
												S.P-3.5	S.P-5.0	S.P-7.0
VV-II B-65	65	130	15	4	155	14	217	320	130	190	263	13 kg	14 kg	15 kg
VV-II B-80	80	145	19	4	180	14	242	325	133	192	294	17 kg	18 kg	20 kg
VV-II B-100	100	165	19	8	200	16	294	364	145	219	332	33 kg	35 kg	37 kg
VV-II B-125	125	200	19	8	235	16	344	403	157	246	374	39 kg	42 kg	45 kg

MODEL	d1	d2	d	N	D	t	B	H	H1	H2	L	WEIGHT
VV-II B-FC-80	80	145	19	4	180	18	245	310	132	178	142	20 kg
VV-II B-FC-100	100	165	19	8	200	20	294	348	143	205	168	28 kg
VV-II B-FC-125	125	200	19	8	235	20	347	384	162	222	198	40 kg
VV-II B-FC-150	150	230	19	8	265	22	390	465	190	275	220	51 kg
VV-II B-FC-200	200	280	19	8	320	24	491	549	216	333	275	88 kg
VV-II B-FC-250	250	345	23	12	385	26	585	682	268	414	320	138 kg

COMPLIANCE WITH IMO MSC/Circ.677
 Circ.1009 Circ.1324 and ISO 15364

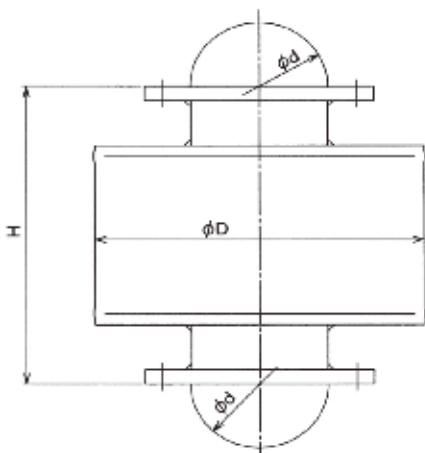
NC No.12 BUFFER CHAMBER

for HIGH VELOCITY VENTING SYSTEM
Approved by NK



MODEL	d	H	D	kg
HBC-PS-80	80	300	216.3	22
HBC-PS-100	100	350	267.4	35
HBC-PS-125	125	380	318.5	50
HBC-PS-150	150	430	355.6	65
HBC-PS-200	200	530	457.2	115
HBC-PS-250	250	580	558.8	170

CONNECTING FLANGE : JIS5K



NC No.11 GAS FREE VENT COVER

Purpose Gas freeing purposes on cargo tanks on board ships.

Features Fitting of cargo tank vent post. Incorporating double flame screen. Approved by NK/ABS/LRS.

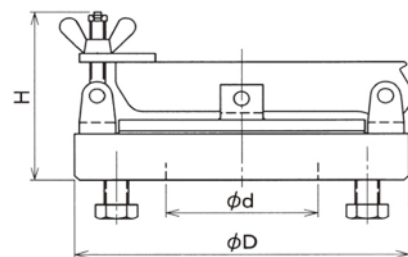


MODEL	d	H	D	kg
GFVC-(E,F)-100	100	125	220	10
GFVC-(E,F)-125	125	125	252	13
GFVC-(E,F)-150	150	125	280	14
GFVC-(E,F)-200	200	130	330	19
GFVC-(E,F)-250	250	130	390	29
GFVC-(E,F)-300	300	130	440	35
GFVC-(E,F)-350	335	130	480	41

CONNECTING FLANGE : JIS5K

MODEL	d	H	D	WEIGHT
GFVC-II B-100	100	125	220	10
GFVC-II B-125	125	125	252	13
GFVC-II B-150	150	125	280	14

COMPLIANCE WITH IMO MSC/Circ.677
Circ.1009 Circ.1324 and ISO 15364



NC No.15 FLAME SCREEN

Purpose Gas freeing purposes on cargo tanks on board ships.

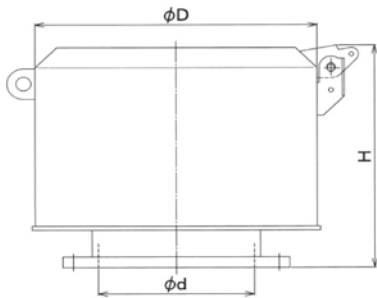
Features Fitting of vent main post top. Incorporating double flame screen. Approved by NK/ABS/LRS.

630-N MODEL



MODEL	d	H	H1	L	D	kg
630-N-250	250A	425	260	320	311	50
630-N-300	300A	470	305	370	366	60
630-N-350	350A	500	330	390	406	75
630-N-400	400A	540	360	435	456	95
630-N-450	450A	600	400	480	516	125
630-N-500	500A	640	430	520	576	150
630-N-550	550A	680	470	540	626	180
630-N-600	600A	740	505	600	686	200
630-N-650	650A	790	535	655	746	240
630-N-700	700A	840	570	700	801	300
630-N-750	750A	920	620	730	851	330

CONNECTING FLANGE : JIS5K

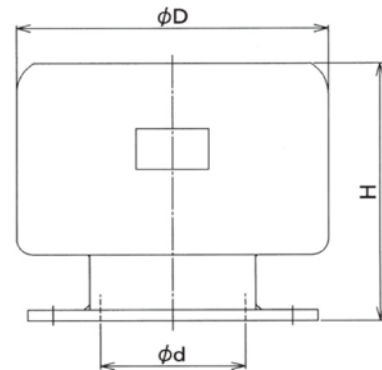


630-C MODEL



MODEL	d	H	D1	D2	kg
630C-80	80A	176	180	117	3.6
630C-100	100A	191	215	143	4.6
630C-125	125A	216	245	168	6.3
630C-150	150A	250	285	194	9.5
630C-200	200A	330	365	245	15

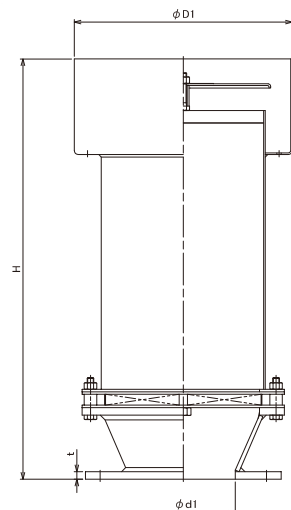
CONNECTING FLANGE : JIS5K



630-EB MODEL

MODEL	H	t	N	d	d1	d2	D1	D	W (kg)
630EB-80	360	8	4	19	80	145	169	180	8
630EB-100	430	8	4	19	100	165	206	200	10
630EB-125	500	9	8	19	125	200	262	235	15
630EB-150	625	9	8	19	150	230	300	265	19
630EB-200	772	10	10	23	200	280	392	320	30

COMPLIANCE WITH IMO MSC/Circ.677
 Circ.1009 Circ.1324 and ISO 15364



NC No.9 PISTON TYPE BREATHER VALVE

Purpose Cargo tanks in oil tankers to relieve the effect of overpressure or vacuum caused by thermal variations or during cargo loading and unloading.

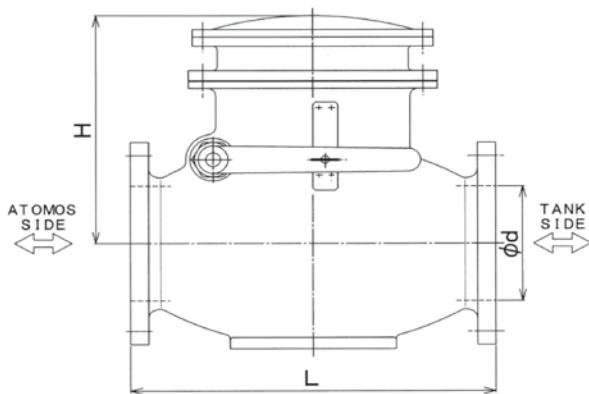
Features Fitting of vent main pipe.

BVN-1 Type



MODEL	d1	d2	H	kg
BVN-1-80	80	280	210	32
BVN-1-100	100	320	220	42
BVN-1-150	150	440	290	90
BVN-1-200	200	520	330	140
BVN-1-250	250	660	395	260

CONNECTING FLANGE : JIS5K

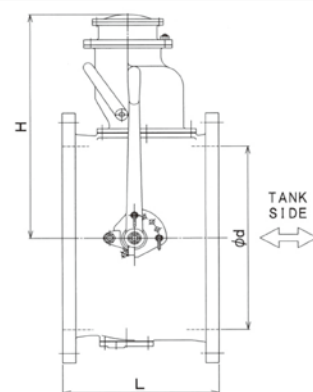


BVN-6 Type



MODEL	d1	d2	H	kg
BVN-6-250	250	265	475	130
BVN-6-300	300	315	500	140
BVN-6-350	335	350	515	165
BVN-6-400	380	405	545	185
BVN-6-450	430	455	570	210
BVN-6-500	480	505	595	240
BVN-6-550	530	555	620	285
BVN-6-600	580	605	650	315
BVN-6-650	630	660	675	350

CONNECTING FLANGE : JIS5K



NC No.13 WEIGHT TYPE BREATHER VALVE with FLAME SCREEN

Purpose Cargo tanks in oil tankers to relieve the effect of overpressure or vacuum caused by thermal variations or during cargo loading and unloading.

Features Fitting of vent main pipe. Approved by NK.

BVW-13C
MODEL



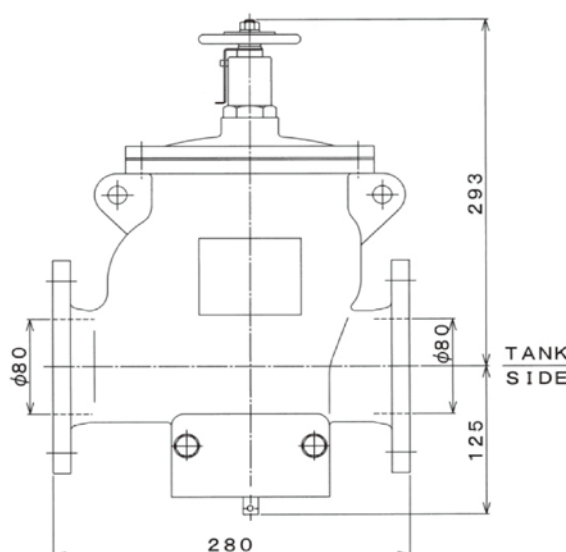
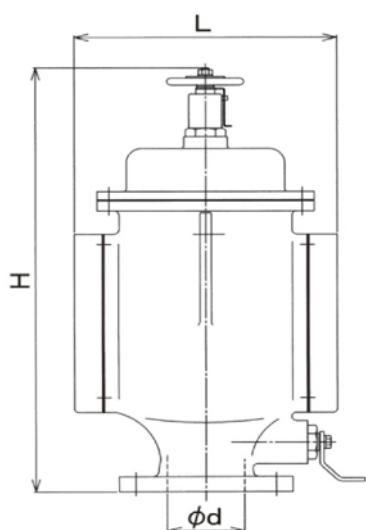
BVW-41C-80 (FC) &
BVW-41C-II-B-80(SCS)
CONNECTING
FLANGE : JIS5K



MODEL	d1	L	H	kg
BVW-13C-FC-80	80	508	270	57
BVW-13C-FC-100	100	538	305	80

CONNECTING FLANGE : JIS5K

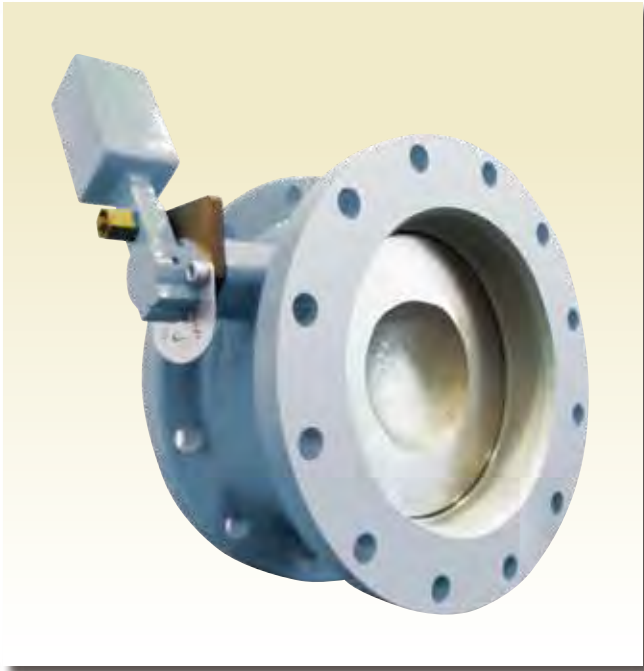
APPLICATION for IMO
MSC/Circ. 1324 II B



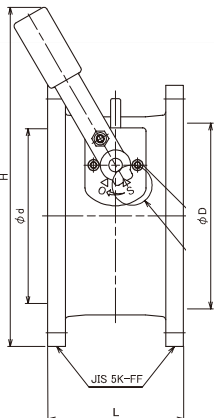
NC No.63I GAS LINE NON-RETURN VALVE

Purpose Preventing flow back of flammable gas to cargo tank.

Features Minimized pressure drop for light weight valve. With shut handle.



MODEL	ΦD	L	H	WEIGHT(kg)
IGNV II -200-R	217	190	393	45
IGNV II -250-R	274	200	500	65
IGNV II -300-R	324	210	613	80
IGNV II -350-R	356	220	680	100
IGNV II -400-R	406	250	725	140
IGNV II -450-R	456	250	810	175
IGNV II -500-R	506	300	908	205
IGNV II -550-R	556	350	1014	255
IGNV II -600-R	606	400	1078	335
IGNV II -650-R	661	400	1190	385



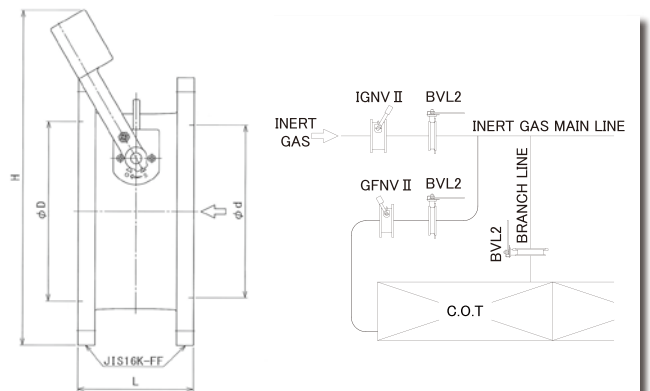
NC No.63 NON-RETURN VALVE

Purpose Preventing flow back for cargo oil to inert gas line. Fitting to connection line of inert gas pipe and cargo oil pipe.

Features Valve lift is low pressure. With shut handle.



MODEL	ΦD	L	H	WEIGHT(kg)
GFNV II -016-200-R	217	200	408	53.2
GFNV II -016-250-R	274	220	523	79.7
GFNV II -016-300-R	324	230	638	100.1
GFNV II -016-350-R	356	240	710	134.9
GFNV II -016-400-R	406	260	758	182.5
GFNV II -016-450-R	456	270	845	222.1
GFNV II -016-500-R	506	300	946	268.1
GFNV II -016-550-R	556	374	1051	348.7
GFNV II -016-600-R	606	428	1115	453.2
GFNV II -016-650-R	661	432	1225	510.8



NC No.62 SWING CHECK VALVE

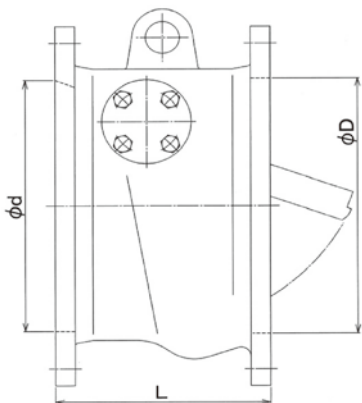
Purpose Preventing flow back for cargo oil pump discharge.

Features Short length.



MODEL	SIZE	ϕd	ϕD	L1	WEIGHT(kg)
BCV-SCH-016-150B	150	150	155	180	35
BCV-SCH-016-200B	200	200	205	200	72
BCV-SCH-016-250B	250	250	255	230	133
BCV-SCH-016-300B	300	300	305	240	160
BCV-SCH-016-350B	350	335	340	260	200
BCV-SCH-016-400B	400	380	390	300	260
BCV-SCH-016-450B	450	430	440	320	315
BCV-SCH-016-500B	500	480	490	350	365
BCV-SCH-016-550B	550	530	540	400	465
BCV-SCH-016-600B	600	580	590	420	570
BCV-SCH-016-650B	650	630	640	450	690

MODEL	SIZE	ϕd	ϕD	L1	WEIGHT(kg)
BCV-SCH-005-200B	200	200	205	190	53
BCV-SCH-005-250B	250	250	255	230	125
BCV-SCH-005-300B	300	300	305	240	147
BCV-SCH-005-350B	350	335	340	260	185
BCV-SCH-005-400B	400	380	390	300	240
BCV-SCH-005-450B	450	430	440	320	290
BCV-SCH-005-500B	500	480	490	350	335
BCV-SCH-005-550B	550	530	540	400	440
BCV-SCH-005-600B	600	580	590	420	530



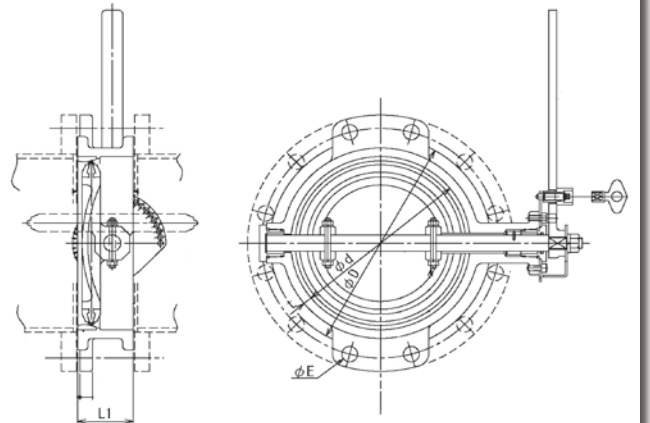
NC No.71 GAS LINE BUTTERFLY VALVE

Purpose Isolation of inert gas line.

Features IMO MSC.I circ.1582



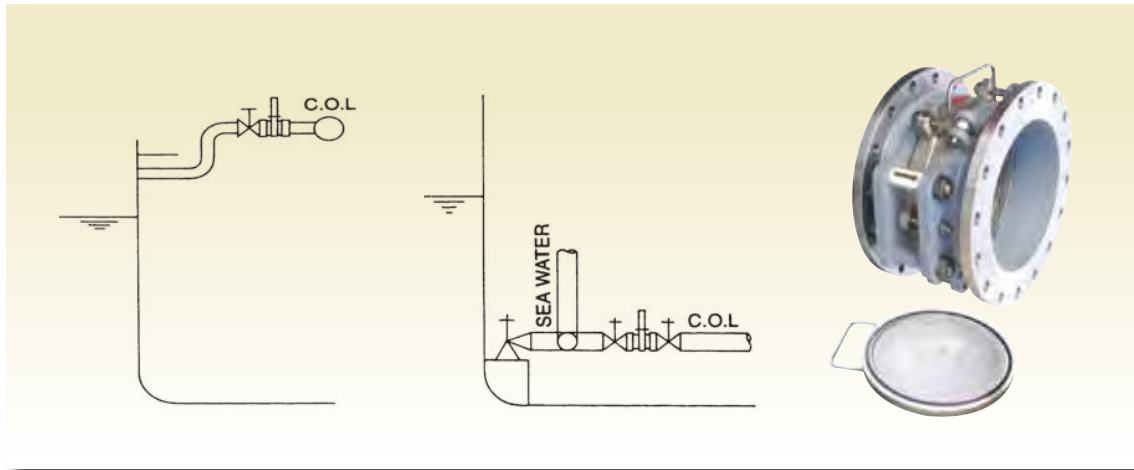
MODEL	ϕd	ΦD	ΦE	L1	WEIGHT(kg)
BVL2-005-150-NN	160	210	19	80	17
BVL2-005-200-NN	210	255	23	80	25
BVL2-005-250-NN	260	320	23	80	28
BVL2-005-300-NN	310	365	23	80	32
BVL2-005-350-NN	350	405	25	80	37
BVL2-005-400-NN	390	465	25	80	47
BVL2-005-450-NN	440	525	25	90	70
BVL2-005-500-NN	490	575	25	90	75
BVL2-005-550-NN	540	630	27	90	103
BVL2-005-600-NN	590	680	27	90	110
BVL2-005-650-NN	640	735	27	120	145
BVL2-005-700-NN	690	785	27	120	160



NC No.77 LINE BLINDER

Purpose Cargo oil over board discharge line as closing appliances.
Sea chest and cargo branch line as closing appliances.

Features Easy operation.



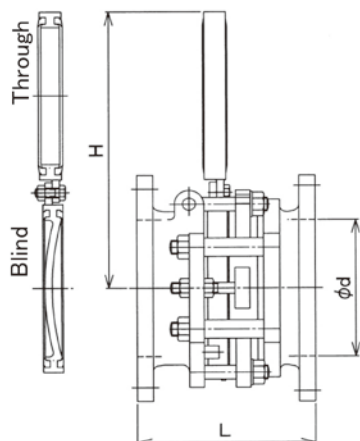
MODEL	d	L	H	WEIGHT(kg)
BLVA-016-100B	100	230	253	42
BLVA-016-150B	150	240	328	63
BLVA-016-200B	200	250	403	86
BLVA-016-250B	250	270	500	119
BLVA-016-300B	300	280	575	160
BLVA-016-350B	350	300	623	230
BLVA-016-400B	380	340	---	284
BLVA-016-450B	430	380	---	340
BLVA-016-500B	480	520	---	450
BLVA-016-550B	530	530	---	475
BLVA-016-600B	580	565	---	560
BLVA-016-650B	630	565	---	710
BLVA-016-700B	680	630	---	810

CONNECTING FLANGE : JIS16K

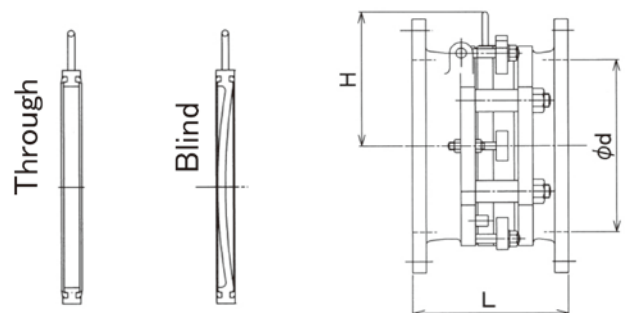
MODEL	d	L	H	WEIGHT(kg)
BLVA-010-100B	100	222	253	38
BLVA-010-150B	150	236	328	57
BLVA-010-200B	200	242	403	78
BLVA-010-250B	250	262	500	105
BLVA-010-300B	300	268	575	140
BLVA-010-350B	335	284	583	195
BLVA-010-400B	380	320	---	238
BLVA-010-450B	430	360	---	280
BLVA-010-500B	480	496	---	365
BLVA-010-550B	530	505	---	370
BLVA-010-600B	580	537	---	451
BLVA-010-650B	630	537	---	620
BLVA-010-700B	680	598	---	710

CONNECTING FLANGE : JIS10K

MODEL : BLVA-100B to 350B

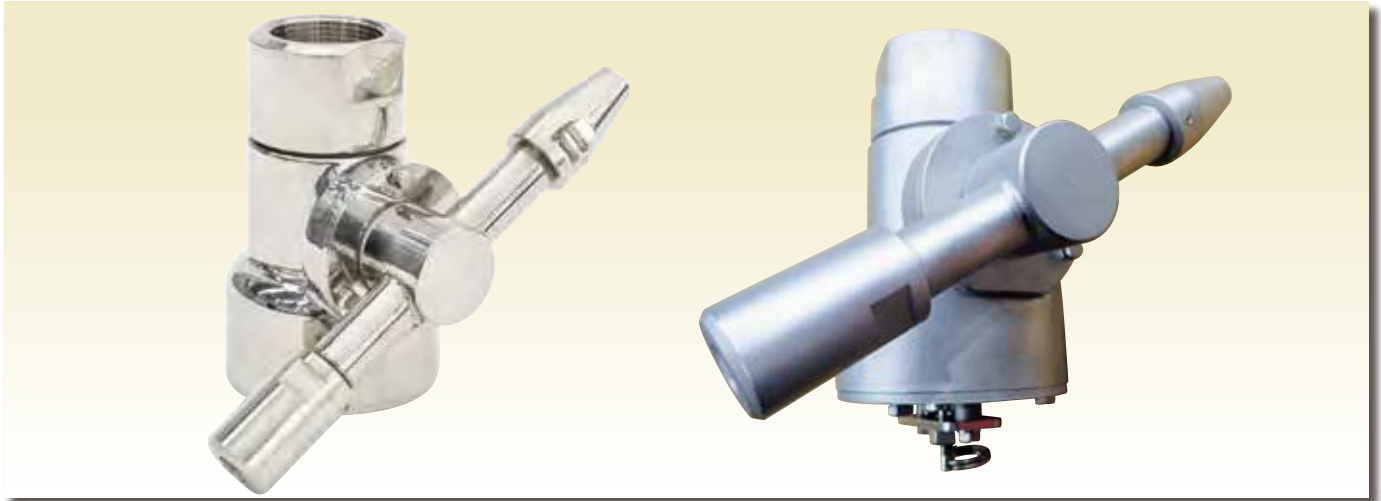


MODEL : BLVA-400B to 700B



NC No. 67 JWP-40 CHEMICAL TANK CLEANING GEAR

Features The turbine driven unit of which employ washing liquid is combined with the nozzle. The machine is promised to trouble-free that the materials are withstood from the resistance of circumstances in tanks, strength and corrosion.



MODEL	JWP-40
BORE(mm)	40 (G1-1/2)
CAPACITY(m ³ /h)	5 to 10
PRESSURE(MPa)	0.2 to 0.6
DRIVING	Turbine

NEW PRODUCT

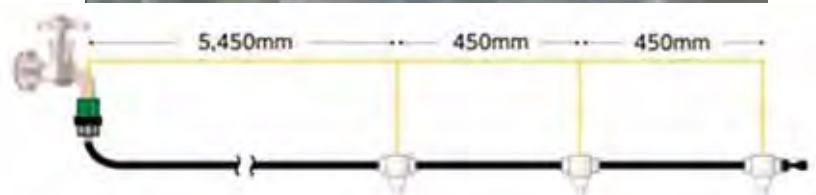
MIST DIY

Purpose

Mist shower for heat stroke.

Features

Due to the heat of vaporization effect, the sensible temperature drops by 3 to 5°C. Even if you use it for 1 hour, the water charge is about 1 yen. MIST DIY can be expanded to 30 nozzles and 30min length. Heat stroke countermeasures can be realized at very low cost.



GAS RELIEF VALVE

Purpose Safety valve for liquid gas carrier cargo tank.

Features Full lift and full capacity by pilot operate mechanism.

NC No. 103 MODEL Type Approval

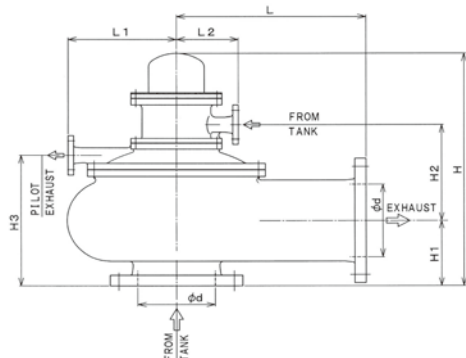


CONNECTING FLANGE : JIS10K

MODEL	d	L	L1	L2	H	H1	H2	H3	kg
103-100	100	204	200	160	525	114	213	246	80
103-150	150	346	235	160	555	141	222	282	120
103-200	200	483	280	160	635	173	264	353	180
103-250	250	623	320	160	700	213	286	413	280

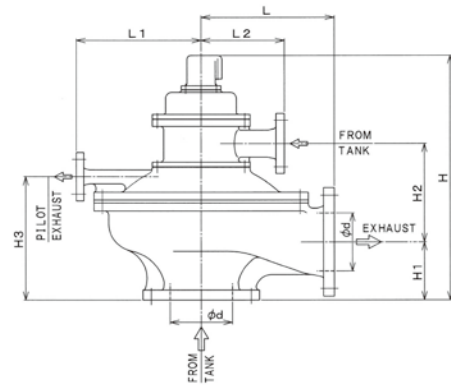
CONNECTING FLANGE : ANSI 150 lb

MODEL	d	L	L1	L2	H	H1	H2	H3	kg
103-100	100	210	200	160	525	120	213	252	80
103-150	150	350	235	160	555	145	222	286	120
103-200	200	490	280	160	635	180	264	360	180
103-250	250	630	320	160	700	220	286	420	280



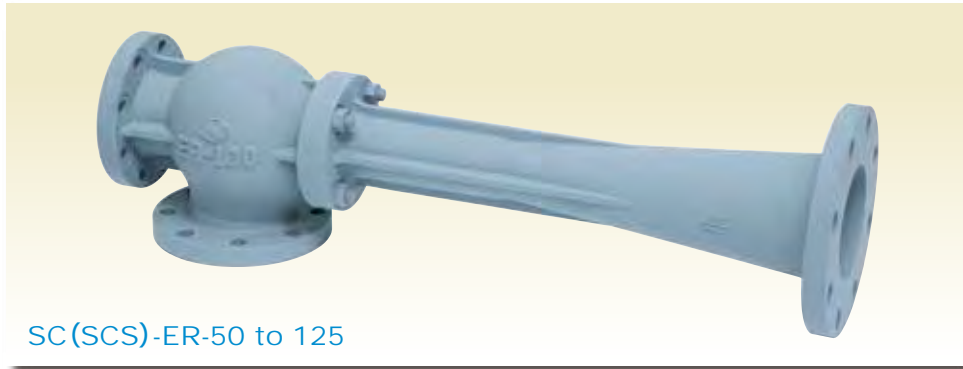
CONNECTING FLANGE : JIS10K

MODEL	d	L	L1	L2	H	H1	H2	H3	kg
101-100	100	244	224	163	565	114	214	252	46
101-150	150	320	300	200	630	150	254	318	80
101-200	200	370	350	200	700	190	284	387	105
101-250	250	435	363	200	755	210	320	460	130



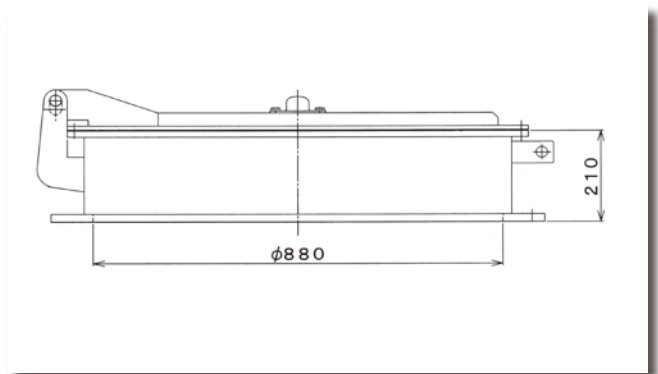
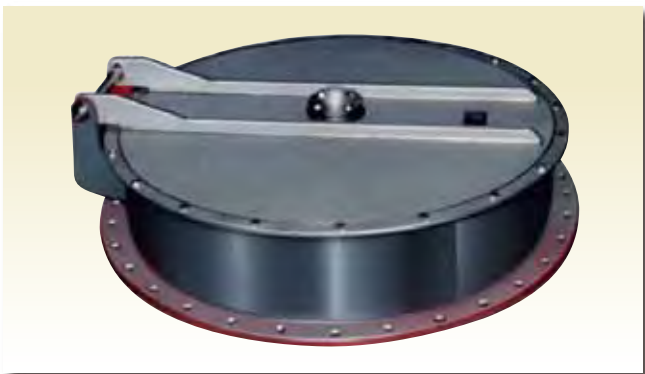
EDUCTOR FOR INTER BARRIER SPACE

Purpose It can be used for hold bilge space and interbarrier space for LNG / LPG carriers.



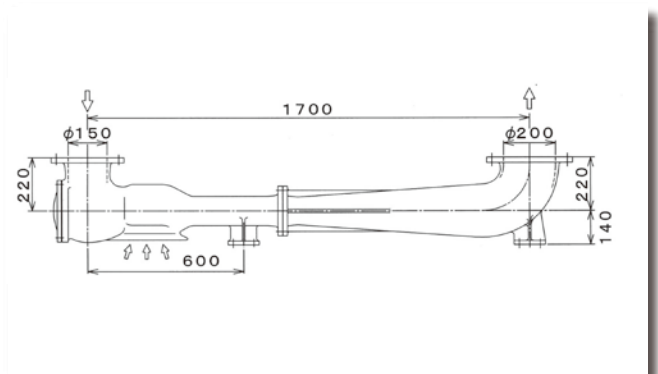
NC No.106 EMERGENCY OPEN COVER

Purpose Emergency release appliance for inter barrier space.



NC No.104 LPG JET EDUCTOR

Purpose LPG stripping.

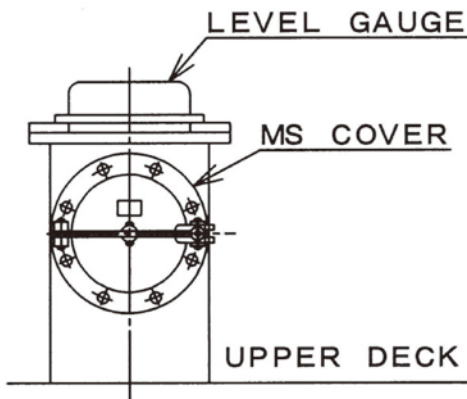


NC No. 11 MS COVER

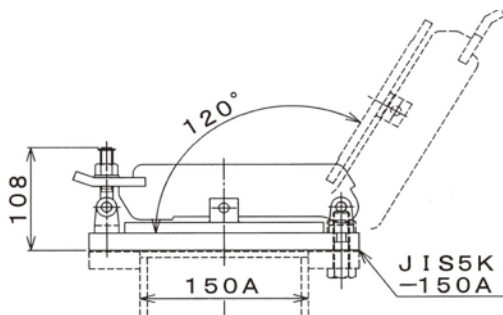
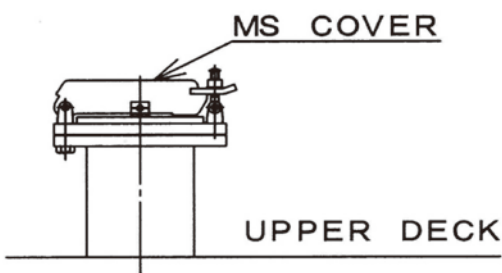
Purpose For Level Gauge maintenance and Liquid sampling
MS-L-150 : Gas contact part - SUS316L MODEL



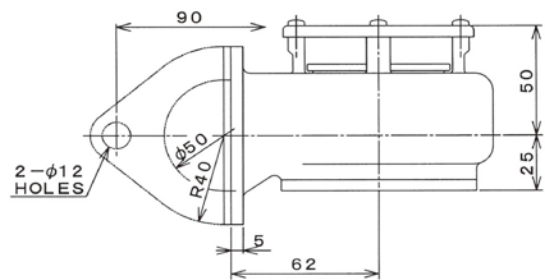
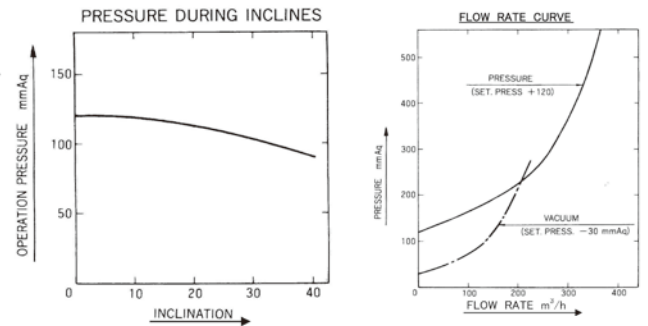
For LEVEL GAUGE MAINTENANCE



For LIQUID SAMPLING



NC No. 13 BREATHER VALVE for Life Boat



NIIKURA KOGYO CO., LTD. TAIWAN BRANCH

〒81356, 1F No.310, Lida Rd., Zuoying Dist, Kaohsiung City, Taiwan
TEL. +886-7-346-0227 FAX. +886-7-346-0127

**NIIKURA KOGYO CO.,LTD. SINGAPORE BRANCH
(Engineer&Sales)**

singapore@niikura.co.jp

SINGAPORE WAREHOUSE

singapore@niikura.co.jp

TOP COAT CO.,LTD.

2391-5, Jinba, Gotenba-shi, SHIZUOKA, 412-0047, JAPAN
TEL. +81-550-80-2070 FAX. +81-550-80-2071

SAGA IMONO CO.,LTD.

6-4-2, Takagisenishi, Saga-shi, SAGA, 849-0921, JAPAN
TEL. +81-952-31-3175 FAX. +81-952-31-3178



新倉工業株式會社

NIIKURA KOGYO CO.,LTD.

2314-6, Jinba, Gotenba-shi, SHIZUOKA, 412-0047, JAPAN
TEL. +81-550-78-6220 FAX. +81-550-80-2300
URL: <https://www.niikura.co.jp/>



TOP COAT CO.,LTD.



SAGA IMONO CO.,LTD.



NIIKURA KOGYO CO.,LTD